



2019

The British Berrichon Sheep Society Yearbook



*Your Society
Your Yearbook!*



I would like to start by saying that I feel very proud and honoured to be made president of the British Berrichon Sheep Society. I hope I can be a proactive president by attending as many shows and sales as I can and represent our fantastic breed at sheep events and meetings.

As breeders we must not be negative in these testing and uncertain times. Our breed can adapt and does not need lots of concentrates, which is perhaps the biggest cost in sheep production currently. I am sure it's going to be tough but it's going to be tougher for other breeds.

I still have massive faith in the Berrichon. What more do you want from a terminal sheep? Easy lambing, easy to finish and capable of achieving good grades.

I would like to wish Carl and Charles good luck for the next couple of years, a young team that will work hard for the society and the breeders and will have my full support. I am looking forward to meeting as many breeders as I can throughout the summer shows and sales.

I hope you all have a happy, healthy and prosperous 2019.

Tom

BRITISH BERRICHON



The Berrichon is a large white faced, medium boned, well fleshed sheep originating from the Cher region of France. Its primary role has been that of a terminal sire producing quick growing easy fleshed lambs capable of being finished at a range of weights to suit varying market specifications and demands.

Berrichon Traits - Berrichon breeders have concentrated on breeding sheep which can lamb easily and are active at birth being quickly on to their feet and suckling. The Berrichon has a triangular shaped head and is smooth over the shoulder and hip making it an ideal choice for

gimmers, ewe hogs and all first time lambers. The Berrichon also has a tight skin and the wool is of a very high standard which has in the past been exported for use in high class wool products in Japan.

Berrichon Rams - The rams are very active and capable of serving large numbers of ewes both under intensive and extensive systems. They are well fleshed all over with deep gigots and as a result of this Berrichon sired lambs weigh very well.

Berrichon Ewes - The Berrichon ewes can lamb naturally all the year round and also have the ability to lamb three times in two years under intensive systems. This ability to lamb out of season has led to the Berrichon being introduced to other breeds to produce cross bred females able to lamb earlier in the season to capitalise on the normally higher price spring lamb trade. Berrichon ewes are very protective mothers with strong maternal instincts.

“ITS PRIMARY ROLE HAS BEEN THAT OF A TERMINAL SIRE PRODUCING QUICK GROWING EASY FLESHED LAMBS”



Why use a Berrichon?

Excellent loins
with deep
well rounded
fleshed gigots

Long carcass
for extra weight

Triangular shaped
head for ease
of lambing

Good quality wool
and a tight skin

Rams are very
active, capable
of serving
large numbers
of Ewes

Ewes will lamb
out of season
making them a
good crossbred
Ewe replacement

Sound feet and
legs with good mobility

Ewes can lamb naturally all year round



SOCIETY CONTACTS

SECRETARY

Sue Powell
Tregwynt
Three Ashes
Hereford HR2 8LY

Tel: 07974 360 807

01989 770 071

E-Mail: berrichon@btconnect.com

CHAIRMAN

Carl Gwynne
The Pykes
1 Hay Road
Talgarth
Brecon
Powys LD3 0AN

Tel: 07971 429778

PRESIDENT

Tom Stayt
9 Burtons Bank
Church Westcote
Chipping Norton
Oxfordshire OX7 6SE

Tel: 07970472335

VICE CHAIRMAN

Charles Holtom
Park Farm Cottage
Cornets End Lane
Meriden Nr Coventry
CV7 7LF

Tel: 07845 391101

HONOURARY LIFE MEMBERS

Mrs S Drury, The Lodge, Sutton Bassett, Market Harborough, Leicestershire
Mrs P Hall, 83 Central Avenue, Syston, Leicestershire



PROFESSIONALS IN LIVESTOCK MARKETING THE BIG FIVE

SUCCESSFUL LIVESTOCK CENTRES FROM THE COTSWOLDS TO WEST WALES

Pedigree & Commercial Auction Sales
conducted with experience, enthusiasm and full back up nationwide.

ANNUAL SOCIETY SHOW & SALE - SATURDAY, 13th JULY 2019
'BEST OF THE BERRICHONS' SALE – SATURDAY 16th NOVEMBER 2019

Full details of all Sales and Services from

The Heath Meadow, Nunnery Way, Worcester. Tel: 01905 769770

Website: www.mccartneys.co.uk

Email: worcester@mccartneys.co.uk

Shearwell

*For your tags & much more.
Call us or go online today!*

FREE
Replacement
Cattle & Sheep Tags
For life - Even when sold
Please call us for details



£1.30

E23® Button or Mini

EID button tag with mini or button back

Combi 2000® Mini / Button Visual flag or button tags



from
45p



from
45p

SET Tags

Visual
and EID



Breeding Pairs 81p

EID Slaughter From 59p



**Shearwell
Data**

Animal Identification
& Management Systems

Prices correct at time of print and exclude VAT & delivery.

Tel. 01643 841611

Ad code BER19

www.shearwell.co.uk

Berrichon Cross...The Fat of the lamb

On the back of the success of using Berrichon rams as terminal sires on our own ewe flock for prime lamb production, we decided to try and source as many Berrichon cross lambs as we could from other farms to use in our fattening system.

A big part of our operation is that we purchase a couple of thousand store lambs every year to fatten ourselves, either on stubble turnips or new leys.

These are split into smaller matching groups and compared upon sale. The majority are Suffolk crosses or continental crosses. The attributes of the Berrichon cross lambs lend themselves well suited to this system as they are often easy fleshing and easy care.

In the past, we have found it difficult to source Berrichon cross lambs in large quantities but now they are becoming more popular we have found it increasingly easier.

To maximise our profits, we run some lambs to high weights because total price per head is more important than price per kilo. If it was possible, we would choose to buy all Berrichon cross lambs, as on analysis of the various groups that go through our system, it is these that come out on top, of which, make the most profit.

E.G. Hudspeth & Son.

The Oldfield Berrichon Journey

I'm Nick Thompson, with my partner Samantha we farm a small hill farm in Haworth, West Yorkshire. The land runs to around 800 feet on the north side of the valley so we need a tough kind of sheep.

We ran mostly North of England mules up to 15 years ago that we put a Texel tup on to produce a commercial lamb.

Although the end result was a good commercial lambs, unfortunately we sadly experienced quite a few complications at lambing time due to large heads & a lack of get up & go. I saw an advert for a Berrichon tup sale at Carlisle & the slender v-shape of the head with the size & strength of the body caught my eye.

At the sale I talked to some Berrichon breeders & was impressed at their claims and the look of the tups in real life and duly purchased a ram. We put him to the North of England mule which produced a nice fat lamb, in keeping with what the market was demanding. In addition, lambing was much easier with the head shape & the lambs were really sharp at birth. Within minutes of being born they were trying to find the teat, like little monsters! Once up and sucking they never looked back.

We decided to keep some of the gimmers that grew into big strong long barrelled breeding ewes which flourish on our farm. They have kept the traits of the mule for multiple births, combined with the easier

lambing and lambs with a willingness to live. We are halfway through our lambing this season and the signs are looking good!

Recently we have decided to venture into pedigree Berrichons so have bought 10 ewes to start our flock, named Oldfield after the farm. We are currently going through the process of becoming MV accredited so we can maybe go to shows and sell at breed sales. Hopefully we might meet some of you there.



FLYING THE BERRICHON FLAG IN GERMANY

Berrichon du Cher Herdbuchzucht

Rudolf u. André Düvel - Kleine Grund 12 - 37191 Elvershausen

Rudolf u. André Düvel
Kleine Grund 12
37191 Elvershausen

Tel. 055 52 / 87 29
Fax 055 52 / 70 98 95

Elvershausen, den 17.03.2019



Berrichon du Cher Pedigree Flock Düvel

User Flock is one of the oldest and biggest in Germany. We breed all Sheep ARR/ARR and MV free.

The lambs are controlling from user Sheep Society (Landesschafzuchtverband Hannover) between 80-120 days, they look to the wigh and scanning the Muscle and Fett with Ultrashall. Only the best are for Pedigree and the other come to the butcher.

We have only one Sale where we can going to sale rams. There is in Cloppenburg. On the Sale all Sheep are MV free and the most are directly for Export, there are Texel, German Milk Sheep, Charollais, Dorper and only we with Berrichons.

The buyers are International, they come from Israel, Austria, Griechenland and the UK (They buy German Milk Sheep Rams)

The most Sheep from us going in Export or we buy directly from the Farm. We have Commercial Farmers they come all 2 years and buy rams, because they are very glad about the easy lambing and good growing.

This year we have the first Export with ewe lambs to France, we are very pleased. The nice Award for me was this Year in february, I was one with three France Judge on the Paris Show.

The popularity of Berrichons in Germany is becoming more and more.

We wish all Berrichon Breeders and hopefully future.

Best Regards

André Düvel
André Düvel

Rudolf Düvel
Rudolf Düvel



e-Mail: RuA.Duevel@t-online.de · www.berrichon-zucht-duevel.de



Join NSA today to make a difference

.....

NATIONAL SHEEP ASSOCIATION,
PROVIDING A VOICE FOR THE UK SHEEP INDUSTRY

Visit www.nationalsheep.org.uk/membership



**OUR
MEMBERS
MATTER**

**BY JOINING
YOU WILL**

**RECEIVE A
WIDE RANGE OF
MEMBERSHIP
BENEFITS**



Binding Edge



your business your future



NSA: Your voice for sheep farming matters

As the UK's exit from the EU moves increasingly closer, there has never been a more important time to champion the interests of the sheep sector, be that pedigree breeders or commercial sheep producers, and the National Sheep Association (NSA) is committed to doing just that.

To build a voice that is stronger than ever NSA is constantly building its profile and resources to tackle Brexit and other pressing concerns. We are working tirelessly on longstanding challenges and opportunities, promoting sheep health and the role of sheep meat in a healthy diet, and supporting and encouraging the industry's next generation onto the sheep farming ladder.

A key part in all that NSA do is to keep its members informed and as up to date as possible, equipping them with the knowledge and experience needed to build sustainable, viable businesses, moving forward into the future. The wide range of benefits available to members include:

- Sheep Farmer Magazine, published six times a year with the latest news and technical information

- Weekly Email updates to keep members abreast of what is happening in the sheep sector

- Free legal helpline offering 30 minutes free legal advice to help members businesses

- Free or discounted entry to NSA regional and national Sheep events (See below)

- Opportunity to sell pedigree breeding stock at NSA ram sales

- Use of the NSA lambing list service, providing help at lambing time

- Regional meetings, farm walks, meetings etc

With so much work to be done to secure a positive future for the UK sheep industry there has never been a better time to join the association or to visit one of the many NSA events that will take place throughout 2019.

This year NSA regions will hold informative and enjoyable events including NSA Central Region Early Gathering in Derbyshire, NSA Welsh Sheep in Gwynedd, NSA North Sheep in North Yorkshire, NSA Highland Sheep in Caithness, NSA Sheep South West in Devon and last but not least NSA Sheep Northern Ireland in County Antrim.

These events are the perfect opportunity to meet face to

face with industry specific exhibitors to keep up to date with the latest innovations helping us all to move our sheep farming businesses forward. And of course, NSA looks forward to welcoming the Berrichon Society to these events as a popular breed society for many of the UK's sheep farmers. As well as the larger NSA events don't forget to look out for the many farm walks, meetings and NSA Next generation days that will be held across the UK this year.

This year, NSA is proud to work with agricultural plastic product supplier JFC Agri in offering four prize draws spread throughout 2019 giving new and existing NSA members a chance to win a JFC Foam Footbath and 20 litres of hoof solution! For more information on NSA membership or upcoming NSA events please visit

www.nationalsheep.org.uk

or contact

enquiries@nationalsheep.org.uk



AN UNFAMILIAR NORTHERN FLOCK

After reading an article in the Farmers Guardian back in 2012 featuring the name Berrichon, I was prompted to follow up and research this unfamiliar breed of sheep.

In September 2012, unable to attend the sale myself, a friend involved in breeding Berrichons with his family, purchased a shearling tup for me from the Builth sales. This was closely followed by a purchase of four sheep from the Welshpool in lamb sale. And my interest in the Berrichon breed grew from here. I now have a flock of 10 pure Berrichon.

I use the Berrichon rams throughout my commercial flock of North of England Mules, and Texel X. And although I still use other terminal sires, I've found the Berrichon fits into my system very well. Over time I have kept Berrichon X females out of the North of England Mule and have now started crossing back onto them with other commercial sires and this seems to work well. They pass on the ease of lambing, producing a great fat lamb.

The positives of the Berrichon breed for me are their ease to lamb with little assistance, and the ability of the lamb to get to its feet and begin suckling. I find them great to use on hoggas again because of their ease to lamb. As the lambs mature, they grow quickly and do really well, using grass to do this. The lambs are able to use the grass to fatten, and as a result, weigh well.

I have now been involved with the Berrichon breed for the past 7 years, and in that time I have certainly seen the breed expand and improve especially with regards to conformation.



Chris Jackson
(Mattbelle Flock, Ingleton, North Yorkshire)

THE PASSING OF 'THE GENTLEMAN' JACK

It is with much sadness that we record the death of Jack Chamberlain on 16th February 2019.

Jack was a very good supporter of the British Berrichon Sheep Society, having served on the Council for many years and was also it's President for two year's.

Jack loved showing his Berrichon Sheep and did so with a great deal of success, especially with his Ram Lambs. He was, of course a very discerning judge.

Jack's lasting legacy would be his instigation of the Society's In-Lamb Ewe Sale at Welshpool each November. Jack was a true gentleman and will be sadly missed by all his many friends.



Premier Sheep And Premier Lamb Drench

Organically chelated trace element
vitamin supplements

Not all mineral drenches are the same



For more information contact Jonathan Guy

T 01886 880482

M 07866 607466

E jganimalhealth@aol.com

W www.jganimalhealth.com



GOITRE BERRICHON Perigree at a scale

Binding Edge

Having started with 6 Pedigree Berrichon ewes and a ram in 2001, the intention was to form a small pedigree flock to produce breeding rams for the 400 ewe commercial flock.

As time progressed the commercial flock was dispersed, to allow for dairy expansion, and the pedigree flock has grown. By now the flock numbers almost 250 registered pure-breds. All are bred to pure rams, with the exception of some 25 ewes that are bred to a Blue-Texel ram.

Lambing time

The flock lambs between Christmas day and the end of

January, and this year a lambing percentage of 170% was achieved in a 6 week window. The tight lambing season is a result of using teaser rams, with 3 or 4 running with the flock for 17 days prior to tupping. As Rhys is a vet, the yearlings that do not make our strict grade for sale are vasectomised and either run with our flock or are sold as MV accredited teasers.

All ewes are scanned, and colour coded by ram. At housing, normally the 1st week in December, they are sheared, and grouped according to scanning results and early/late lambing. They are fed by a 3-in-1 feeder which allows continuous access, regulated amount of concentrate.

The sheep are fed the same concentrates as the dairy cows, but without the copper mineral. Once lambed, the ewe and lambs are individually penned for a minimum of 24hrs to allow for monitoring and bonding.

The lambs are individually double tagged, weighed and recorded electronically using the Shearwell farm software. Mothering ability and milking ability of dam are also recorded, as are ease of lambing and vigour of lamb. Any lambs/ewes that cause hassle are not retained for breeding, whatever the appearance of the lamb now, or in 8 weeks time!

Continued...

Ram selection

Today the flock is predominantly home bred with half a dozen purchased ewes. In order to keep new bloodlines in the flock great emphasis is placed on our stock rams. Each year we aim to purchase one or two rams that fit our breeding criteria.

Selection time



The ewes are all moved into groups and are indoor housed until the lambs are weaned at 7-8 weeks of age. At this point the ewes are turned out to sparse pasture, while the lambs are all weight recorded again. The growth rates are calculated and the minimum value, normally around 350g/day growth is used as a cut off for retention for breeding.

At this point too, testicles, teeth and conformation is assessed, with any faults resulting in entry to the fattening group. Out of some 400 lambs born each year, only 50 ewe lambs and 50 ram lambs are retained and registered for breeding. It's a tough selection process with many smart and stylish animals being slaughtered due to missing out on the growth rates. We believe the 8-week growth rate measure is a good indicator of maternal milking ability as well as the growth potential of the lamb. Unfortunately, there are some lines within the breed that do lack milk.

Those not suitable for retention for the flock are grouped together and finished indoors on creep and hay. Our 1st load last year of 100 lambs slaughtered on the 20th of

April, had 83 grade as 'E' and a dead weight of 19kgs. Even from a commercial only side, the pure Berrichon is a profitable and easy to manage breed.

Tupping time



Tupping time is a big event here at Goitre Fach, and takes us some two days to sort the flock out. 1st draft separates the barren ewes, using the Shearwell machine as a reminder for the lambing time problems. The 2nd separation is to avoid inbreeding, while the 3rd separation is to sire match the ewes. We try and match the strengths and weaknesses of each ewe to a ram to improve this. As with all mating's, this does not always work, but a strong team of stock rams always helps!

Some 25 older ewes are selected for service by a Blue Texel ram. The best ram lambs from this cross are kept for breeding- the 'Blueberry' ram is a very popular terminal sire!!

Show time



The main show for the Goitre Flock is the Royal Welsh. We have attended this show since 2002, and it is the highlight of our calendar and a real shop window for the stock. We have been fortunate enough to have been Berrichon breed champion 4 times in the last 6 years. We have also been Reserve Interbreed Continental Champion at the show three times in the last 5 years. The ultimate prize still eludes us. The show shepherd of the year has also been won for two years in a row by Ifan, and Gareth has the privilege of judging this year's competition.

Sale time

From the early summer months onwards, we sell many rams off the farm. Many return every year for their choice of ram. For the last couple of years some of the best breeder's rams will go to the premier society sale in Carlisle, with last year being particularly successful for us with high prices and success at the pre-sale show. Local ram sales are attended, however the bulk of the rams, as well as a couple of choice ram lambs are sold in the main NSA sale at Builth. This is a big day for us with as many as 40 rams being sold when counting the Blueberry's, the yearlings and the ram lambs!

Not every year achieves high prices, but it is always very pleasing to see repeat buyers returning into the pen. The demand for a good Berrichon ram is increasing year on year, and a commitment to produce a lamb that is born easy, with plenty of vigour, a high growth rate and that finishes well is sure to be formula for success, in what could be a difficult post-Brexit time.



SOCIETY TIES
AVAILABLE TO ORDER NOW!

The British Berrichon Sheep Society

MEMBERS LIST

Central and Southern England

<i>Name</i>	<i>Area</i>	<i>Phone No.</i>	<i>Flock Name</i>	<i>Prefix</i>
Coe, Mr B	Norfolk	07780780042	Typhoon	BDC
Arthurs, Miss E	Herefordshire	01600891059	Trewarne	BEA
Manford, Mrs B	Ellesmere	01691622594	Hollies	BEM
Luca, B.	Southam	07842527383	Bridge	BRL
Stayt, Mr B.	Gloucestershire	01451822920	Westcote	BTS
Farrington, Mr S	Herefordshire	01531660240	Buckies	BUC
Hillhouse, C.	Worcestershire	01584881657	Axel	CAM
Hillhouse, C.	Worcestershire	01584881657	Woodston	CMH
Majero, Ms N	London	07831392676	Croyde Manor	CRM
White, Mr C.	Oxon	01295712287	Holt Park	CRW
Cantrill, Mr D.	Derbyshire	01889591716	Hopesmore	DAC
Burton, Mr D	Buckinghamshire	07375521992	Egg's	EGG
Fearns, Mrs R	Derbyshire	0129883586	Oakenclough	FEA
Esq. F.W.B. King	Devon	01626862466	Kingsland	FWK
Yeo, Miss L	Hertfordshire	07792270923	Hatfield	HAT
Son, La & Ma Holtom &	Nr Coventry	01676523410	Spring	HLM
Hughes, D L & C D	Herefordshire,	07737061972	Cherry Trees	HUG
Pritchard, Mr I	Gloucestershire	01594546920	China Court	IJP
Yeo, Mr J.	Devon	01271890200	Inclodon	INC
Coldicott, Mr J	Gloucestershire	01452840737	Spooners	JHC
Keeves, M.S.	Northants	01295711919	Headlands	KMK
Pritchard K,P & C	Herefordshire	01981500555	Colebrook	KPC
Colley, Miss L	Worcestershire	01299861529	Horseley Springs	LRC
Hobbs, Mr D	Dorset	01202882001	Millpond	MDH
Bett, Mrs J	Lincolnshire,	01507363742	Yarburgh	MFF
Brice, Mr M.J.	Devon	01398351322	Beacon	MJB
Moore, Mr K	Birmingham	07710656500	Thornborough	MKB
Williams, Mr M.	Herefordshire	01989770059	Tregwynt	MRW
Powell, Mrs S.	Herefordshire	01989770071	Tregwynt	MRW1
Priddle, Mr R.	Bucks	01844237809	Oakcroft	OAK
Park & Baird	Wiltshire	01666823817	Charlesbury	PAB
Harris, Mr P	Herefordshire	01885483774	Dinshaw	PRH
Blake, Mr R.	Yelverton	01822852384	Walkham	RFB
Hall, Rd & Pl	Leicestershire	01162609373	Willowfield	RPH
Elliot, R.G & T.G	Northampton	01604831491	Nene	RTE
Drury, Mrs S.	Nr. Market Harborough	0185846243	Sutton	SBS
Cartwright, Mrs S	Bedford	01234881253	Gains	SRC
Hill, Mr P	Bath	01225421792	Swainswick	SWK
Cole, Mr D.	Devon,	01822841874	Tamar	TAM
Hope, Mr P J	Herefordshire	01873860221	Tan House	TAN
Digweed, Mr T	Gloucestershire	01386849364	Tooloos	TMY
Stayt, Mr T.	Oxfordshire	01993830442	Statesman	TOM
Lakey, Miss M	Norfolk	07884581050	Westlake	WES
Metherell, Mr W G	Devon	01566783334	Lewtrenchard	WGM
Windrush Farming Partners	Gloucestershire	01451822920	Windrush	WIN
James Family	Shropshire	01746712643	Ditton	WLV
Yeo, Mr M.C. & K	N. Devon	01769560022	Swincombe	YEO

The British Berrichon Sheep Society

MEMBERS LIST

North of England
Scotland and Ireland

Name	Area	Phone No.	Flock Name	Prefix
Gallagher, Mr A	Co Fermanagh	02866341793	Botha	AGA
Barbour, Mr Troy	Dumfries	0165950263	Newark Tjib	ARK
Fawcett, A V & Sons	Cleveland	01642722406	Ingleby	AVF
Wilson, Mr J	Cleveland	07711435036	Burnhope	BUR
Coy, F E	Rotherham	01709701807	Shrogswood	COY
Jackson, Mr	Ingleton	01524241649	Mattbelle	CRJ
Newnham Hall Farms	Ripon	07738400101	Duck House	DUC
Burgess, Mr E.		01387850220	Criffel	EWB
Whitcher, D.	York	07813050163	Galtres	GAL
Tait & Co, R H	Berwickshire	07773764794	Thorneydykes	GJT
I.D.Hunter, Mr	Cumbria	01946810295	Galemire	IDH
Messrs Pollock & Tannahill	Co. Londonerry	07872832334	Sunrise	JMP
Jamison, Ms L. S.	Co. Down	02892638011	Doneysheil	JOX
Drury, Miss K.E.		0142284681	Bassett	KED
McGlothlin, Miss	Cumbria	01697320426	Kietle	KMC
Fraser, Mr W.	Cumbria	01697320426	Kietle	KMC1
Johnston, I. D.	Falkirk	01324551317	Kirkton	KTN
Maltas, Miss L	East Yorkshire	07825558225	Skipsea	LMM
Macdonald, A & S M	Hexham	07801308006	Bowershield	MAC
Barbour, Mrs F.	Dumfries	0165950263	Newark	NEW
Graham, Mr R.	Stirlingshire	0178683086	Strathallan	RBG
Curry, Mr C	Northumberland	01669630266	Burradon	RCC
Thompson, Mr R N	West Yorkshire	07768511730	Oldfield	RNT
Davenport, R.A.	Cheshire	07973823602	Bradwall	ROB
R., Mr Powell.	Roxburghshire	01573225178	Hillhead	RWP
Irvine, Mr B.	Aberdeenshire	01346561296	Sauchnie	SAU
Barker, Mr M.	North Yorkshire	01748884258	Swaledale	SWA
Cockbain, Mr W.	Cumbria	01768772133	Rakefoot	WJC
Cockbain, Mr J	Cumbria	01768772133	Rakefoot	WJC1
Sanderson, Miss C	York	01439771493	Whiterose	YWR



For the latest news & views from
YOUR British Berrichon Sheep Society
visit the **NEW** website **TODAY!**

www.berrichonsociety.com

The British Berrichon Sheep Society

MEMBERS LIST

Wales

Name	Area	Phone No.	Flock Name	Prefix
Johnson, Mr A	Powys	07891648903	Erw Las	ALJ
Bowen, Mr A	Carmarthenshire	07973435020	Glyncoch	AWB
Morse, Mr C	Carmarthenshire	01994231757	Marshland	CIM
Gwynne, C.	Powys	01874711173	Glannant	CMG
Wood, Miss P	Powys	01874711173	Glannant	CMG1
James-Bevan,	Caernarfon	01286830496	Tryfan	DAB
Gwynne, D. J.	Powys	01874711676	Creigiau	DAJ
Wilson, J.A.	Powys	01874711676	Creigiau	DAJ1
Morse, Mr D	Carmarthenshire		Tywi	DAN
Griffiths, Mr W	Carmarthenshire	01558824363	Berllan	DIG
Ellis, Mr D W	Conwy	01690770220	Cerniog	DWE
Rowlands, Mr G.	Llangefni	01248722172	Dwyllan	ESR
Thomas, Mr G.B.	Swansea	01792882569	Goitre	GBT
Thomas, Mr R	Swansea	01792882569	Goitre	GBT2
Williams, Mrs G	Gwynedd	01286 660403	Grugmai	GMJ
Williams, Mr G O	Denbighshire	01824750722	Segwen	GOW
H.M.Shakespeare,	Monmouthshire	01873890733	Inkerman	HMS
Jones, Mr G	Carmarthenshire	07974933374	Gynin	IGJ
Price, Mr I.	Clywyd	01978721214	Clawddoffa	IWP
Rees, A.	Carmarthen	01554772830	Doric	JEN
Chamberlain, Mr J.	Powys	01982551404	Henallt	JSC
Williams, Mr J	Caernarfon	01286677057	Prysgol	MDN
Jones, Mr M R	Carmarthenshire	01994230505	Aber	MRJ
Williams, Mr O	Gwynedd	01286830850	Brynglas	ORW
Evans, Mr R	Conwy	01492680418	Dolwen	RGE
Richards, Mr Aled	Powys	01938500910	Glanvyrnwy	RIC
Ryder, Mr R M	Welshpool	01938810946	Ryders	RYD
Bevan, Mr T	Gwynedd	01286830496	Snowdonia	TBB
Parry, V & J.O	Anglesey	01407720274	Ebol	VJP
Davies, Mr W I	Aberystwyth	01970617449	Crucyw	WID
Powell, Mr J	Powys	01588638255	Camlad	WJP
Williams, Mr W	Gwynedd	01758770208	Amlwch	WTM
Evans, Mr B	Powys	07801868626	Janos	YKK



www.facebook.com/britishberrichonsheep



Farm insurance, the way it should be

We're a family-run business and pride ourselves on forging long term relationships with our farming and agricultural clients. Covering the Midlands, South West and South East, we deliver an extensive range of farm, agri business and equine policies tailored to you.

Farm & Equine **01865 844985**

General **01865 842084**

 Follow us **@County_Farm**

www.county-insurance.co.uk/farms



Independent Insurance Brokers County Insurance Services Limited. Address and Registered Office: County House, Glyme Court, Langford Lane, Kidlington, Oxon OX5 1LQ. Authorised and regulated by the Financial Conduct Authority (FCA) (FRN: 597267). Company registered in England No. 08411634

Berrichon Judges Profiles...



Carl Gwynne – Carlisle Show & Sale

Carl started with Berrichons in 2010 with his partner Paula and that's when the Glannant flock was founded. As part of the Glannant flock Carl has helped to bring out many Champions and even Interbreed Champion at Moreton-in-Marsh Show 2015. He had male champion at The Royal Three Counties Show 2018 with a homebred Ram Lamb. Carl has judged many shows, including Interbreed Champion at Royal Cheshire Show. He deems it an honour to be asked to judge the Berrichons at Carlisle Show & Sale 2019 as Chairman of the Society and is very much looking forward to it.

Charles Holtom - Worcester early first choice sale

Charles is the 2nd generation of the Holtom family. Has been breeding pedigree livestock since 1999 starting with Texels along with Bleu du Maines. In 2013 Charles established their flock of Berrichons with their first purchase from the Headlands flock a ram lamb Headlands Bruce.

Since starting with Berrichons the Holtom family has had many successes in the show ring winning interbreed at Kenilworth show and breed champion at the Royal Three Counties show for the third year running and reserve interbreed pairs 2016. One half of the pair Spring prince charming sold at Worcester market taking the breed record at 3500gns to G B Thomas Goitre Flock. Charles has judged at many shows and is thrilled to be asked to judge at this years Worcester Early First Choice Berrichon sale 2019.

Jayne Pollock – Welshpool In-Lamb Ewe Sale

I am delighted to be judging the Welshpool In lamb sale. I have been breeding pedigree Rouge sheep for 17 years and have been lucky to enjoy success in both the show and sale ring over the years. I have been privileged to judge at the Great Yorkshire Show and at Premier sales. I have been following the Berrichon breed with great interest over the last few years and I'm delighted to say we have our first crop of pedigree lambs on the ground as well as this we are using the Berrichon on our commercial rouge ewes. I am looking forward to developing our flock and raising awareness of the Berrichon breed in Northern Ireland!

Berrichon Judges Profiles...



Tom Stayt – N.S.A Main Ram Sale

Tom is a third-generation shepherd from the Cotswolds and runs the renowned Statesman Flock. He spends most of his time contract shepherding throughout the year in the local area for multiple clients. Tom can be seen judging various sheep breeds around the country through the summer months and has judged breed classes at The Royal Highland, The Great Yorkshire & The Royal Welsh Shows and most recently judged the interbreed sheep championship at The Royal Bath & West, South of England, Suffolk & Kent Shows.

Ben Stayt – Welshpool Multi Breed Ram Sale

From breeding and showing his own sheep since a very young, Ben has knowledge and experience beyond his years. In the show ring, he has achieved multiple championships at major events around the country with four different breeds, most numerous with the Berrichons. Ben is a fourth-generation shepherd and now runs a modern pedigree & commercial sheep breeding enterprise in the Cotswolds – home of the renowned Windrush Flock of British Berrichons as well as other breeds.

FED UP OF FEED COSTS?

Berrichon sired lambs are...



**EASILY BORN
EASILY REARED
EASILY FINISHED**





graphic print website design

www.herefordesign.co.uk

WINNING THE BERRICHON NOVICE SHIELD

Winning the 2018 Novice shield at the Annual general meeting of the British Berrichon Society held at Builth Wells culminated in a fantastic first showing year for us. Our journey into Berrichon's started the year before when we attended the Royal Welsh where we were showing our own Charolais Sheep. We have been breeding Pedigree Charolais Sheep for over 12 years now and successfully showing them for the past 5 years, it has always been a joint effort within the James family.

The week of the 2017 RWAS Paul and myself decided to look at the other breeds of sheep on the Monday, the Charolais are always shown on the Tuesday so this would give us a great opportunity to walk round. I had asked Paul the previous year if I could have something to show myself, he asked what breed would I like, honestly I did not know, we had gone from pen to pen and considered pros and cons for each breed until my eye caught a pen of Berrichon's they were comparable to the Charolais in size and stance although they stood with a real leg at each corner, they had great back ends, most of all to me they had character in their face, as I believed they were smiling. We both decided we would watch the judging of the Berrichon's and stood out on a very hot day through all the classes, with anticipation we followed an age ewe win her class and go onto to become overall Champion, our delight was felt around the ring and I was hooked. Paul and myself walked back to the pen to congratulate the winner who was Bryan Evans of the Janos Flock, we exchanged the usual pleasantries, and to my surprise Paul asked Bryan if his ewe would be for sale, to my amazement a deal was done and all my Birthdays and Christmases had come together.

We went to collect our champion a few months later, and now as we have come to know Bryan, we were not going to leave with just her, he recommended she have a companion and the ewe which caught both our eyes was not to be overlooked as she had finished 4th in the same aged ewe class at the RW. Both were safely in lamb and we had not bought them with the

intention of showing them as we felt they had nothing to prove, but I considered myself privileged to have some quality stock to start the flock.

Later that year we took some in lamb Charolais ewes to Welshpool market, ironically it was a shared sale and a representation of Berrichon's, would be attending the show and sale by then Paul and Ollie had taken a keen interest in them and in a joint decision we would look at buying a lamb so that I had a yearling to show the following season. It was not long before an ewe lamb caught our eyes, from a pen which was produced by Ben Stayt (Windrush Flock), and she didn't disappoint in the show, winning her class, she was then always coming home with us.

The following show season she was the only Berrichon to accompany the Charolais on the show circuit early in the season, her first show was at North Somerset where she would have to go against any other continental, although she was bought for me to show she proved to be feisty and needed to be settled, Ollie had the experience and it proved the right decision, she was champion yearling and then went on to become reserve interbreed champion, feeling elated I can remember thinking it can only be downhill from now.

Our next show was Cheshire County, The Charolais were on fire, and our Berrichon was slowly moving up through the ranks in the other ring again being against any other continentals, that day sticks in my mind the most as she went under four different judges that day to be crowned reserve interbreed Champion to our own Aged Ram, two judges came across to us to say she could not fault her. She went to the RW and finished a respectable 5th the judges' comments was that her fleece was too loose otherwise she would not have been there, this was purely down to our naivety on the showing requirements.

The catalogue came for the Worcester Premier Sale in July and needing a day out we all attended, a ram was on the list but not

essential as we had been offered the use of a ram and with only a few it was merely a day to view stock types, There was a good selection of lambs and yearling tubs and soon the show was under way, a yearling ram from the Janos flock light Paul's eye, he finished 2nd to the Champion and hopefully will have a big impact on our small flock.

Although we only had a few Berrichon's to cover we thought we could also use him on some half-bred ewes for the early lamb trade. He did not disappoint us here at Ditton not only have we had some lovely Berrichon lambs but the part-bred lambs have been the first to hit the early spring trade averaging 38 kilos.

We had two more shows to attend before the end of the season which added to our Novice shield, Burwarton was our penultimate show of the season and our local, I was on my own with the yearling as Paul and Ollie were otherwise occupied in the Charolais ring, she did not disappoint and finished reserve champion. Tenbury which was our final show of the season, where again we were against any other continental breeds, it was all hands on deck as Paul and Ollie we showing against me in the ring, it was not a winning one but we still achieved champion for highest place Berrichon, I was well and truly hooked and came home with a sash and two trophies.

We purchased two classy lambs from Bryan and a stylish in-lamb ewe from Clive Morse at the Welshpool Sale roll on 2019.



Mandy, Paul & Ollie James

The installation of our unique Solutions Brush Pile System™ into existing sliding sash windows will benefit your property with expertly repaired and serviced windows, up to 98% draught-proofed with significantly reduced energy consumption.

SLIDING SASH SOLUTIONS®

Repairing, servicing & upgrading traditional sliding sash windows



NATIONWIDE COVERAGE - FREE SURVEYS

**Are your windows draughty?
Difficult to open and close?**

In need of repair?

Let in unacceptable noise levels?

Rattle in the wind?

**Are they fitted with adequate
locks and fittings?**

Do not replace your sash windows. The Sliding Sash Solutions system for overhauling traditional sash windows is an effective way to eliminate all these problems without changing the appearance of your original windows.

Our Specialist renovations and repair service for sliding sash windows includes any timber repairs, replacement of rotten sills and re-glazing of damaged panes along with the installation of our unique Solutions Brush Pile System™

In addition to our upgrading service, we can also manufacture and install new gas filled double glazed sashes to match the existing into your original box frames, or if the frames have been removed, we can replace them.

Call for your FREE Survey

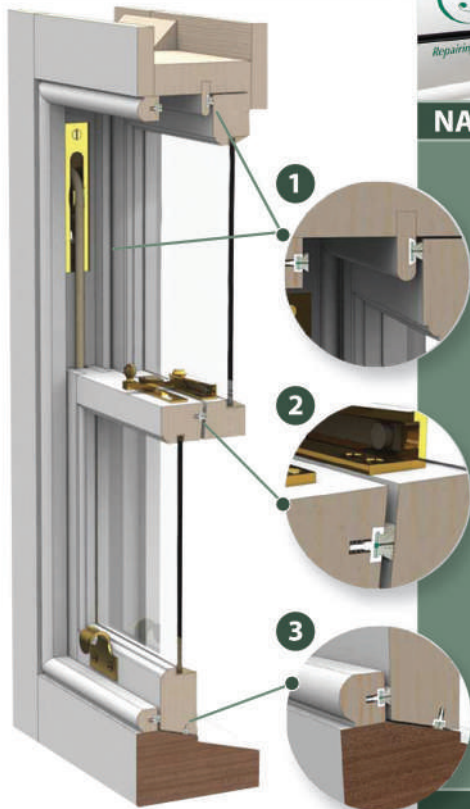
0800 731 5905

www.slidingsashsolutions.co.uk

1 The Solutions parting bead is available in different sizes to match the original pre-routed with our dovetail plastic pile carrier ready to receive the appropriate size brush pile.

2 The Solutions T Groove is routed into the mid rail and the bottom rail to receive our 'T' plastic followed by the appropriate size brush pile.

3 The Solutions staff bead is fitted internally and is available in different sizes to match the original, pre-routed with our 'T' plastic followed by the appropriate size brush pile.



**VAT IS CHARGED AT ONLY 5%
ON THE INSTALLATION
OF THE SOLUTION BRUSH PILE SYSTEM**

WINNING THE REID MINTY SHIELD 2018

SUCCESS IS THE ROCK ON WHICH WE BUILD THE BERRICHON JANOS FLOCK

JANOS Flock was established in November 2013 with the purchase of two ewe lambs from Goitre flock. Several other select ewes and ewe lambs were then purchased from well-established breeders, including the Madryn, Burnhope and Windrush flocks as well as from the Hanallt and Snowdonia dispersal sales.

Our 2019 crop of lambs sired by Janos Sydney, Goitre Pocket Rocket and Marshland Troy show great potential. We are extremely happy that our rams are purchased by both pedigree and commercial breeders.

2018 was our best year to date starting the show and sale season at The Three Counties where judge Mr Denis Gall placed our shearing ewe as Reserve Champion. Our Pair was also put forward to represent the breed in the Interbreed Championship.

We then travelled to Worcester's Early First Choice Sale where the show judge was Mr W Williams. As well as gaining the Championship with a shearling ram, several first and second prizes were also achieved.

Our next show was much nearer to home! To the Royal Welsh we went where Mr Bruce Irvine was the judge. There were numerous exceptional sheep entered at this show and it was, therefore, a privilege to achieve Reserve Champion with a shearling ram and Female Champion with an aged ewe. Look out the Thomas boys in 2019!

In August we travelled north to the Carlisle Sale where Mr Ewan Burgess was the judge. We were placed first and second with shearling rams and then honoured to be placed first with a shearling ewe which then progressed to the championship and won the title.

The following month we entered several sheep for the NSA Main Ram Sale in Builth Wells. This was one of our proudest days with our Berrichon sheep. Judge Mr John Yeo placed us first and third in all classes, but the finale for us was gaining Champion with a shearling ram, Reserve Champion with a ram

lamb and Female Champion with a shearling ewe.

Welshpool Ram Sale was later on in September where the judge Mr Steve Smith placed us first with both a shearling ram and a ram lamb. The ram lamb then progressed to Champion.

The final show and sale of 2018 was the In-Lamb Sale in Welshpool, judged by Mr C Jackson. Here we gained first prize with an aged ewe. She went on to be the day's Reserve Champion.

We have seen some exceptional sheep being shown and sold throughout the Berrichon breeders, and it is, therefore, an absolute honour to receive the Reid Minty Shield. We wish everyone success with their sheep in 2019.

Bryan Evans



" Sell Live & Thrive Under The Hammer "

Annually WLS **sells around 500,000 sheep** and in **excess of 10,000 cattle** Welshpool Livestock Sales Ltd has a dedicated team based at the Livestock Centre dealing with the sales & purchases of livestock on behalf of its extensive client base.

Conducting weekly sales of Prime Stock every Monday, the market is reputed to be **the largest Prime Lamb Market in Western Europe**

We conduct weekly sales of Store Sheep & Dairy and Suckler cows, with special fortnightly sales of Store Cattle. We also conduct specialist and Breed Society Sales.

Welshpool Livestock Sales are proud to announce 2019 Official Society Sales:

Ram Sale (Multi Breed) - Thursday 26th September 2019

In-Lamb Ewes & Ewe Lambs - Saturday 2nd November 2019



Premium Sheep & Goat Health Schemes

Safeguarding the Health of Your Stock!

- Contact the PSGHS to gain MV/CAE, Johne's Disease and/or EAE accreditation for your stock

Buying Rams?

- Protect your flock and source MV accredited animals

Other Disease Testing

- Test for Border Disease, CLA and more

Scrapie Monitoring & Genotyping

- Private confidential genotyping service
- Join the Scrapie Monitoring Scheme



Use our member's database to source accredited animals



For full details on Schemes, services available please contact:
Premium Sheep and Goat Health Schemes
Greycrook, St Boswells, TD6 0EQ
T: 01835 822456
E: psghs@sac.co.uk • W: www.sheepandgoathealth.co.uk



www.facebook.com/saccvs

SAC Consulting is a division of SRUC
SRUC is a charity registered in
Scotland, No. SC003712
356469AD19.12.2018



Abortions at Lambing

Abortions are an inevitable part of lambing time and it is important to think about how you are going to deal with them. Remember that the most common diseases causing abortion can infect people and cause serious illness. Pregnant women must not be in contact with sheep at lambing time or handle dirty overalls and equipment used in the flock. Gloves should always be worn when lambing ewes and hands washed thoroughly afterwards. It is best to assume that all abortions carry a risk of disease spread to other ewes and people.

- Isolate and identify all aborted ewes - they may have discharges which will contaminate the environment and infect other ewes
- Dispose of the lambs, placentas, and any dirty bedding

It might not be practical to investigate every abortion but if two or more occur within a short space of time you should take steps to identify the cause. A flock/group rate of more than 2% should definitely be investigated.

- The best way to reach a diagnosis is to take whole aborted lambs and placentas to your local veterinary laboratory
- Submitting fresh material from several ewes will increase the chance of a diagnosis being made
- Placentas are very important for the diagnosis of EAE
- Where distance is a problem your vet can collect samples to post

It is better to try and reach a diagnosis during lambing time as you may be able to take steps to reduce your losses. Only limited testing for a small number of diseases can be carried out on blood samples collected after lambing.

- If EAE is diagnosed your vet may advise injecting some ewes with antibiotics, particularly if the lambing period is over a long time
- If infection with Toxoplasmosis is to blame check that feed stores are cat proof and avoid using the top layer of bales
- If Campylobacter or Salmonella is the problem be careful not to transfer infection via wellies, tyres, equipment, hands and clothes to other groups of sheep. Moving ewes to a new field or reducing the stocking density, e.g. by turning out housed ewes, can help but is often not practical. Turning feed troughs upside down will stop birds contaminating the feeding surface with faeces
- Listeria abortions are often associated with silage feeding. Feed the best available silage and clear away any that is uneaten before supplying more

A diagnosis can allow you to plan for the future. This could include vaccination, rodent control, silage management, food storage, or changes to the management of replacements.





SALE REPORTS

EARLY FIRST CHOICE SALE WORCESTER

(Judge Mr W Williams - Amlwch flock)

Aged ram: 1st Aged ram: 1st B. Evans (Janos flock) lot 2, 2nd T. Stayt (Statesman flock) lot 1.

Shearling ram: 1st & 2nd B. Evans lot 12 & 13, 3rd R & J Bett (Yarburgh flock) lot 5.

Ram lamb: 1st C. Gwynne & P. Wood (Glannant flock) lot 35, 2nd M. Keeves (Headlands flock) lot 30, 3rd B. Evans lot 19.

Shearling ewe: 1st & 2nd L. A. & M. A. Holtom & Son (Spring flock) lot 45 & 44, 3rd B. Evans lot 46.

Ewe lamb: 1st Windrush Farming Partners (Windrush flock) lot 57, 2nd T. Stayt lot 55, 3rd C. Gwynne & P. Wood lot 63.

SUPREME CHAMPION & MALE CHAMPION: B Evans - shearling ram lot 12 - 'JANOS STORM'.

RESERVE SUPREME CHAMPION & FEMALE CHAMPION: - L. A. & M. A. Holtom & Son - shearling ewe lot 45 - 'SPRING SKYE'.

RESERVE MALE CHAMPION: C. Gwynne & P. Wood - ram lamb lot 35 - 'GLANNANT TONY O'SHEA'.

RESERVE FEMALE CHAMPION: Windrush Farming Partners - ewe lamb lot 57 - 'WINDRUSH TALENT ET'.

Top price of the day was the pre-sale show supreme champion from B. Evans' Janos flock. Janos Storm (lot 12) is sired by the noted Windrush Python, a son of Headlands One In A Million and out of a Madryn show ewe. He sold to G. Thomas at 1250gns for the Goitre flock. Closely following and next best was another shearling ram from B. Evans. Janos Sherlock (lot 13) is sired by a Goitre sire and out of a homebred daughter of Rakefoot Million Dollar Man. He sold to the James Family at 1150gns for their Ditton Flock. Staying with the shearlings, Spring Sex Pistol (lot 15) from the Holtom family sold to F. King at 1000gns for the Kingsland flock. He is sired by another son of Headlands One In A Million, Windrush Revolver and out of a homebred daughter of the noted Headlands Bruce.

Top price female was the ewe lamb class winner and reserve female champion, Windrush Talent ET (lot 57) from the Windrush flock. This embryo daughter of the late French import 'Muscleman' had also taken the same results at GYS earlier in the week. She sold to R & J Bett, Yarburgh flock for 820gns, who also took two further leading price ewe lambs. One being Headlands Trinity (lot 67) from M. Keeves' Headlands Flock. Sired by another son of Headlands One In A Million, Windrush Real Deal and out of a homebred dam, she sold for 800gns. And the other, Statesman Tantalized (lot 55) from T. Stayt's Statesman flock. Sired by yet another son of Headlands One In A Million, Windrush Protector and being full sister to Statesman Smitten

the current ewe lamb breed record holder, she sold for 760gns.

Jointly leading the shearling ewe class was the GYS female & reserve champion, Spring Sugar N' Spice (lot 44) from the Holtom family and Janos Sunset (lot 46) from B. Evans. Lot 44 is by Janos Rough Diamond, a RTCS winner and son of Windrush Python. She sold to Park & Baird, Charlesbury flock for 550gns. Lot 46 is by a Goitre sire and out of a show daughter of Windrush Python. She sold to S. Farrington, Buckies flock also for 550gns.

Other leading prices in the males came in the shape of the aged ram class winner consigned by B. Evans. This Goitre ram (lot 2) is by a French import and had been used by the Janos flock before sale. He sold for 800gns to P. Hope, Tan House flock. Leading the ram lamb section was Statesman Talisman (lot 25) from T. Stayt. This son of Windrush Protector and out of a homebred dam with noted relations sold for 680gns to Park & Baird. Closely followed by Headlands Thor (lot 30) from M. Keeves. This son of a Criffel sire and out of a homebred Rakefoot Klansman daughter sold for 600gns to D. Cantrill, Hopesmore flock.



MALE & SUPREME CHAMPION:
JANOS
STORM



SALE REPORTS

CARLISLE PREMIER SALE SHOW RESULTS

(Judge Mr E Burgess - Criffel flock)

Aged ram: 1st T. Stayt (Statesman flock) lot 54, 2nd D. Cantrill (Hopesmore flock) lot 52, 3rd L. Maltas (Clements flock) lot 53.

Shearling ram: 1st & 2nd B. Evans (Janos flock) lot 80 & 59, 3rd R & J Bett (Yarburgh flock) lot 69.

Ram lamb: 1st G. Thomas (Goitre flock) lot 89, 2nd W. Cockbain & Sons (Rakefoot flock) lot 91, 3rd Windrush Farming Partners (Windrush flock) lot 72.

Aged ewe: 1st D. Cantrill lot 105.

Shearling ewe: 1st B. Evans lot 142, 2nd W. Cockbain & Sons lot 113, 3rd B. Evans lot 143

Ewe lamb: 1st G. Thomas lot 155, 2nd B. Evans lot 162, 3rd F. Barbour (Newark flock) lot 161.

SUPREME CHAMPION & FEMALE CHAMPION: B Evans - shearling ewe lot 142 - 'JANOS SHEILA'.

RESERVE SUPREME CHAMPION & MALE CHAMPION: G. Thomas - ram lamb lot 89.

RESERVE FEMALE CHAMPION: G. Thomas - ewe lamb lot 155.

RESERVE MALE CHAMPION: B. Evans - shearling ram lot 60 - 'JANOS SID'.

The Carlisle Premier Sale saw strong demand across all categories with consistent prices throughout. Sheep headed to all corners of the UK, particularly with heightened interest from Northern Ireland.

the demand for quality breeders' tup lambs was lot 92 from A. Bowen. 'Glyncoch Tornado' by a homebred sire, sold for 1,000gns in a joint partnership to Burradon & Hillhead flocks.

Top price of the day came from B. Evans' super consignment. This was lot 60, 'Janos Sid', the pre-sale show winning shearling ram and reserve male champion. This tup by a Goitre prize winning sire and out of a Windrush Python sired home bred ewe sold to D. Ellis, Cerinoge flock for 1,800gns.

Closely following was the second ram lamb from Windrush Farming Partners. Lot 73, 'Windrush Topman', the flocks successful show ram lamb and by the French 'Muscleman' semen, sold for 950gns to Pollock & Tannahill, Northern Ireland.

The next top price was shared between another shearling ram and a ram lamb. First up and staying with the shearlings was lot 69 from J. Bett. 'Yarburgh Samsen' had previously stood breed champion at the Great Yorkshire Show. By the noted Headlands Bruce sire and out of a Hillhead prefix ewe, he sold for 1,700gns in a joint partnership to the Burradon and Hillhead flocks.

Top prices in the female section were dominated by B. Evans. Firstly lot 144, a Burnhope prefix gimmer shearling, sold for 1,100gns to D. Ellis, Cerinoge flock. Also going to the same home was the female and supreme overall champion, lot 142 'Janos Sheila'. She had similar breeding to that of the top price and sold for 900gns. At the same money was lot 143, 'Janos Stella' and again with similar breeding to the last. Lot 145 from B. Evans, a Henallt prefix ewe, sold for 800gns to the Redmond family, Northern Ireland.

Matching this figure of 1,700gns and topping the ram lamb section was the first lamb in the ring from Windrush Farming Partners. Lot 72, 'Windrush Tailor Made', is by the renowned One In A Million sire and out of the super show ewe Windrush Out Of Bounds. He sold in a joint partnership to the Glannant and Spring flocks.

Topping the ewe lamb section was the pre-sale show class winner, lot 155 from the Goitre flock. This lamb is by the breed record holder Spring Prince Charming and out of a homebred ewe sired by the renowned Newark Maximus. She sold for 1,000gns to I. Wallace, Northern Ireland.

Back with the shearlings, 'Janos Sydney', lot 59 from B. Evans, this year's reserve champion at the Royal Welsh Show and by the 3,000gns Woodston sire, sold for 1,600gns to C. Morse, Marshland flock. Second best in the ram lambs was the pre-sale show male champion and reserve overall from the Goitre flock. Lot 89 by the current breed record holder Spring Prince Charming sold for 1,500gns to R. Davenport, Bradwell flock.

Also into four figures was lot 91, 'Rakefoot Tywin' from W. Cockbain and Sons. This son of the renowned Criffel Lionheart and out of a Lorenzo sired homebred ewe sold for 1,100gns to E. Burgess, Criffel flock. Continuing with



**SUPREME
CHAMPION**
JANOS
SHEILA



SALE REPORTS

NSA BUILTH RAM SALE

Aged ram: 1st Aged ram: 1st M. Jones (Aber flock) lot 1215.

Shearling ram: 1st B. Evans (Janos flock) lot 1220, 2nd C. Gwynne & P. Wood (Glannant flock) lot 1233, 3rd B. Evans lot 1219.

Ram lamb: 1st B. Evans lot 1239, 2nd T. Stayt (Statesman flock) lot 1241 (SUB), 3rd B. Evans lot 1240.

Aged ewe: 1st Windrush Farming Partners (Windrush flock) lot 1259, 2nd M. Williams (Tregwynt flock) lot 1255.

Shearling ewe: 1st B. Evans lot 1270, 2nd Windrush Farming Partners lot 1260, 3rd B. Evans lot 1269.

Ewe lamb: 1st B. Evans lot 1271, 2nd D. J. Gwynne Partnership (Creigiau flock) lot 1273, 3rd B. Evans lot 1272.

SUPREME CHAMPION & MALE CHAMPION: B Evans - shearling ram lot 1220.

RESERVE SUPREME CHAMPION: B. Evans - ram lamb lot 1239 - 'JANOS TYSON'.

FEMALE CHAMPION: B. Evans - shearling ewe lot 1270.

There was a somewhat selective trade at Builth but there was a good clearance rate throughout compared to previous years. Top price came in the shape of the pre-sale show female champion from B. Evans (lot 1270). This shearling ewe by a Newark sire and out of a Goitre dam, caught the eye of established breeder C. Morse and sold to his Marshland flock for 820gns.

Next best and also consigned from the Janos flock, was the pre-sale supreme champion (lot 1220). This shearling ram has all Henallt prefix genetics and sold for 750gns. Closely following was another shearling ram 'Janos Santiago' (lot 1219) from B. Evans. This one, sired by the renowned Windrush Python and out of a Glannant dam, sold for 700gns. Creigiau Somerton (lot 1226) from D. Gwynne, sired by homebred ram and out of a Swincombe ewe, sold for 400gns and topped a strong pen of rams from the Creigiau flock.

Back with the females and second best price of the section, also coming from the Janos flock, was another shearling ewe (lot 1269). This one by a Galtres bred ram and out of a Newark dam stayed with the female champion by being purchased by C. Morse for 620gns. A call of 480gns came twice for two females from the Snowdonia dispersal of T. Bevan. Both by a Burradon

sire and out of homebred dams, Snowdonia Regan (lot 1247) sold to R. Davenport, Bradwell flock & Snowdonia Rashina (lot 1248) sold to B. Evans, Janos flock.

The first prize winning pre-sale show ewe lamb, 'Janos Tiffy', topped the ewe lamb section. She is by a Goitre sire and out of a Madryn prefix ewe and sold to P. Hope, Tan House flock for 500gns.

A small entry of ram lambs topped at 400gns twice, both coming from the Janos flock. First up, 'Janos Tyson' (lot 1239) the pre-sale show reserve champion by a Goitre sire and out of a homebred dam. And then 'Janos Taffy' (lot 1240) by a homebred sire and out of a Madryn prefix dam.



**SUPREME
CHAMPION**
Shearling Ram
Lot 1220

NSA SHEEP 2018 - MALVERN

Myself (Carl Gwynne – Glannant Flock), Charles Holtom (Spring Flock) and Sue Powell (Tregwynt Flock) went the day before to set up the stand. It was nice to have both stands up and with a few bits and pieces it looked outstanding, especially with the strong sheep that were provided by Charles.

On the day myself, Charles, Sue, David Gwynne (Creigiau Flock), Tom Stayt (Statesman Flock) and Ben Stayt (Westcote Flock / Manager Windrush Flock) all stood on the stand. We had a very busy day with people looking to try a different breed, Easy lambing & Easy finishing off grass. We also attracted a lot of people from overseas who were looking at the sheep on the stand and were very interested in exporting the sheep overseas. We also had a commercial farmer come up to us and say that we had the best tup at the event, which was very encouraging.

On the whole it was a very busy day with a lot of enquiries. I would like to thank everyone who helped set up and also for being on the stand on the day.



SALE REPORTS

WELSHPOOL IN-LAMB EWE & EWE LAMB SHOW & SALE

(Judge Mr C Jackson - Mattbelle flock)

- Aged Ewe:** 1st B. Evans (Janos flock) lot 242, 2nd T. Stayt (Statesman flock) lot 243, 3rd C. Morse (Marshland flock) lot 235.
- Shearling Ewe:** 1st C. Morse lot 232, 2nd B. Evans lot 200, 3rd M. Williams (Tregwynt flock) lot 230.
- Ewe Lamb:** 1st T. Stayt lot 248, 2nd C. Gwynne & P. Wood (Glannant flock) lot 247, 3rd D. J. Gwynne Partnership (Creigiau flock) lot 252.

SUPREME CHAMPION: C. Morse - shearling ewe lot 232 - 'STRATHALLAN SKYFALL'

RESERVE CHAMPION: B. Evans - aged ewe lot 242 - 'JANOS RHIANNA'.

With There was a somewhat selective trade at this year's Welshpool in-lamb ewe & ewe lamb sale, but many of the in-lamb ewes on offer found new homes with both established & new breeders.

Top price of the day came from a superb consignment from the Janos flock of B. Evans. This 'Henallt' prefix ewe (lot 204) was sold carry twins to the prize-winning ram 'Janos Sydney' and went the way of Pryce for 700gns.

Next best and from the same home was the pre-sale show reserve champion, 'Janos Rhianna' (lot 242). This two year old daughter of 'Rakefoot Million Dollar' and again carrying twins to 'Janos Sydney', caught the eye of established breeder C. Morse who paid 600gns to add her to his Marshland flock.

Another shearling ewe from the Janos flock (lot 203) was next best. This 'Burnhope' prefix ewe was again sold carrying twins to 'Janos Sydney' and sold to C. Holtom for 500gns.

A two year old ewe from the Marshland flock of C. Morse closely followed. 'Marshland Renee' (lot 235) has all 'Tregwynt' breeding and was sold carrying twins to 'Janos Romeo'. She sold to the James Family for 480gns. Another two year old ewe, this time from the Statesman flock of T. Stayt, was next best. 'Amlwch Rhosun' was sold carring twins to the French import 'Physique' and went the way of P. Hope for 450gns.

Shearling ewes each to make 400gns included the pre-sale show champion from the Marshland flock (lot 232). This 'Strathallan' prefix ewe sold carrying twins to 'Janos Romeo' went the way of P. Hope, Tan House flock. Also at the money, were two shearlings from the Statesman consignment. 'Statesman Spicy' (lot 209) & 'Statesman Serene' (lot 217) were both purchased by newly established breeder T. Digweed (Toofoos flock). Both were sold carrying singles, the prior in-lamb to French import 'Physique' and the latter to the renowned 'Windrush Protector'



**SUPREME
CHAMPION
STRATHALLAN
SKYFALL**



**RESERVE
CHAMPION:
JANOS
RHIANNA**

SOCIETY SALES 2019



Sat
13 July
2019

Early First Choice Sale
Worcester Market
Show & Sale of Males &
Females

Fri
30 Aug
2019

Carlisle Sale
Borderway Market, Carlisle
Show & Sale of Males &
Females

Mon
23 Sept
2019

NSA Main Ram Sale
Builth Wells
Show & Sale of
Males & Females

Thur
26 Sept
2019

Multi Breed Ram Sale
Welshpool Livestock Market
Show & Sale of Rams

Sat
2 Nov
2019

In-Lamb Ewe & Ewe Lamb Sale
Welshpool Livestock Market
Show & Sale of In-Lamb Ewes
& Ewe Lambs

NON-SOCIETY SALES 2019

Wed
14 Aug
2019

NSA South West Ram Sale
Exeter Market

Fri
13 Sept
2019

Kelso Ram Sale
Kelso

Further details for Sales call
the secretary, telephone: 01454 811111



NSA SHEEP EVENTS 2019

Tue
21 May
2019

Welsh Sheep
Glynliffon College,
Caernarfon, LL54 5DU

Wed
5 June
2019

North Sheep
Frankland Farms, Rathmell,
Settle, N Yorkshire, BD24 0AJ

Tue
18 June
2019

Sheep South West
Southcott, Burrington,
Devon, EX37 9LF

Mon
1 July
2019

Sheep Northern Ireland
Ballymena Livestock Market,
County Antrim, BT42 4QJ

be found on our website www.berrichonsociety.com or from
09 770071 / 07974 360 807 email: berrichon@btconnect.com

SPRING

WINDRUSH TAILOR MADE

Purchased at Carlisle 2018 top price ram lamb
for 1700gn half share with Glannant Flock.



SPRING PRINCE CHARMING

Sold at Worcester for 3500gn breed record to Góitre Fock Breed
Champion at Kenilworth Show and at the Royal Three Counties Show
and part of reserve interbreed pair.

BERRICKIONS

Home of Champions

HEADLANDS BRUCE

Main Stock Sire had successful show career winning many Breed & Interbreed Championships. Sire of Breed Record Spring Prince Charming.



LA & MA Holtom & Son
Park Farm Cottage
Cornets End Lane
Meriden CV7 7LF

Tel: 01676 523 410



GLANNANT TONY O'SHEA

Half share brought privately with Glannant Flock after his successful first season in the ring. First prize ram lamb and male champion at the royal three counties first prize ram lamb and male champion and reserve breed champion at monmouth show first prize ram lamb and reserve male champion at worcester and breed champion at brecon show

DEVON COUNTY SHOW Judge Mr B Stayt

Aged ram: 1st R. Blake (Walkham flock).
Shearling ram: 1st & 2nd J. Yeo (Inledon flock).
Ram lamb: 1st & 2nd J. Yeo.
Aged ewe: 1st & 2nd J. Yeo.
Shearling ewe: 1st & 2nd J. Yeo.
Ewe lamb: 1st & 2nd J. Yeo.
Group: 1st J. Yeo.

Breed Champion & Female Champion: J Yeo - aged ewe - Inledon Ora.
Reserve Breed Champion & Reserve Female Champion: J. Yeo- ewe lamb - Inledon Triumph.
Male Champion: J. Yeo- ram lamb - Inledon Trojan.
Reserve Male Champion: J. Yeo- shearling ram - Rakefoot Santa Claus.



DEVON COUNTY SHOW
BREED & FEMALE CHAMPION 2018

BURWARTON SHOW Judge Mr T Pritchard

Shearling ram: 1st J. Powell (Camlad flock).
Ram lamb: 1st & 2nd M. Williams (Tregwynt flock), 3rd S. Farrington (Buckies flock).
Aged ewe: 1st M. Williams, 2nd J. Powell, 3rd James family (Ditton flock).
Shearling ewe: 1st James family, 2nd S. Farrington, 3rd M. Williams.
Ewe lamb: 1st & 2nd M. Williams, 3rd S. Farrington.
Group: 1st M. Williams.

Breed Champion: M. Williams- aged ewe- 'TREGWYNT PENE'.
Reserve Breed Champion: James family- shearling ewe- 'WINDRUSH SPRING'.



BURWARTON SHOW
BREED CHAMPION 2018

BRECON SHOW Judge Miss L Yeo

Aged ram: 1st C. Gwynne & P. Wood (Glannant flock).
Shearling ram: 1st C. Morse (Marshland flock).
Ram lamb: 1st C. Gwynne & P. Wood, 2nd M. Williams (Tregwynt flock), 3rd C. Morse.
Aged ewe: 1st D.J. Gwynne Partnership (Creigiau flock), 2nd M. Williams, 3rd C. Gwynne & P. Wood.
Shearling ewe: 1st C. Gwynne & P. Wood, 2nd D.J. Gwynne Partnership, 3rd I. Pritchard (China Court).
Ewe lamb: 1st M. Williams, 2nd C. Morse, 3rd C. Gwynne & P. Wood.
Group: 1st C. Gwynne & P. Wood.

Breed Champion: C. Gwynne & P. Wood- ram lamb- 'GLANNANT TONY O'SHEA'.
Reserve Breed Champion: M. Williams- ewe lamb- 'TREGWYNT TIA'.



BRECON SHOW
BREED CHAMPION 2018

KENILWORTH SHOW Judge Miss P Wood

Ram, shearling or over: 1st, 2nd & 3rd L.A. & M.A. Holtom & Son (Spring flock).
Ram lamb: 1st & 2nd M. Keeves (Headlands flock), 3rd L.A. & M.A. Holtom & Son.
Aged ewe: 1st M. Keeves, 2nd L.A. & M.A. Holtom & Son.
Shearling ewe: 1st & 2nd L.A. & M.A. Holtom & Son, 3rd M. Keeves.
Ewe lamb: 1st & 2nd M. Keeves, 3rd B. Luca (Bridge Meadow flock).

Breed Champion: M. Keeves- ewe lamb- 'HEADLANDS TRINITY'.
Reserve Champion: L.A. & M.A. Holtom & Son- shearling ram- 'SPRING SUPER MARIO'.
Interbreed Group of Three: L.A. & M.A. Holtom & Son.
Reserve Interbreed Ewe Lamb: M. Keeves



KENILWORTH SHOW
BREED CHAMPION 2018



SHOW



RESULTS



THE ROYAL THREE COUNTIES SHOW Judge Mr D Gall

Aged ram: 1st B. Evans (Janos Flock), 2nd L.A. & M.A. Holtom & Son (Spring Flock), 3rd T. Stayt (Statesman Flock).

Shearling ram: 1st L.A. & M.A. Holtom & Son, 2nd & 3rd B. Evans.

Ram lamb: 1st C. Gwynne & P. Wood (Glannant Flock), 2nd T. Stayt, 3rd Windrush Farming Partners (Windrush Flock).

Aged ewe: 1st Windrush Farming Partners, 2nd B. Evans, 3rd T. Stayt.

Shearling ewe: 1st B. Evans, 2nd L.A. & M.A. Holtom & Son, 3rd R & J Bett (Yarburgh Flock).

Ewe lamb: 1st T. Stayt, 2nd B. Evans, 3rd Windrush Farming Partners.

Group of three lambs: 1st Windrush Farming Partners, 2nd C. Morse (Marshland Flock), 3rd B. Evans.

Pair: 1st B. Evans, 2nd Windrush Farming Partners, 3rd T. Stayt.

Male Champion: C. Gwynne & P. Wood- ram lamb- GLANNANT TONY O'SHEA.

Reserver Male Champion: L.A. & M.A. Holtom & Son- shearling ram- SPRING SUPER

Breed & Female Champion: *Windrush Farming Partners - aged ewe - SWINCOMBE PASSION.*

Reserve Breed & Female Champion: B. Evans- shearling ewe- SWINCOMBE SEXY LADY.

THE ROYAL THREE COUNTIES SHOW
BREED CHAMPION 2018

ROYAL WELSH SHOW Judge Mr B Irvine

Ram, shearling or over: 1st G. Thomas (Goitre), 2nd B. Evans (Janos), 3rd C. Gwynne & P. Wood (Glannant).

Ram lamb: 1st G. Thomas, 2nd C. Morse (Marshland flock), 3rd B. Evans.

Aged ewe: 1st B. Evans, 2nd G. Thomas, 3rd James family (Ditton flock).

Shearling ewe: 1st C. Morse, 2nd B. Evans, 3rd G. Thomas.

Ewe lamb: 1st A. Bowen (Glynnoch flock), 2nd C. Gwynne & P. Wood, 3rd G. Thomas.

Group: 1st G. Thomas, 2nd B. Evans, 3rd C. Morse.

Breed Champion & Male Champion: G. Thomas - ram - 'MARSHLAND SALVATORE'.

Reserve Champion & Reserve Male Champion: B. Evans- ram- 'JANOS SYDNEY'.

Female Champion: B. Evans- aged ewe- 'JANOS REEF'.

Reserve Female Champion: C. Morse- shearling ewe- 'MARSHLAND SYLVIA'.

ROYAL WELSH SHOW
BREED CHAMPION 2018

DUMFRIES SHOW

Ram, any age: 1st R. Powell (Hillhead flock).

Ram lamb: 1st & 2nd F. Barbour (Newark flock).

Aged ewe: 1st R. Powell, 2nd & 3rd F. Barbour.

Shearling ewe: 1st F. Barbour, 2nd E. Burgess (Criffel flock), 3rd R. Powell.

Ewe lamb: 1st F. Barbour, 2nd E. Burgess, 3rd F. Barbour.

Breed Champion: F. Barbour- shearling ewe- 'NEWARK SPARKLE'.

Reserve Breed Champion: R. Powell- aged ewe.

DUMFRIES SHOW
BREED CHAMPION 2018



SHOW RESULTS



GREAT YORKSHIRE SHOW Judge Mr D Gall

Ram, shearling or above: 1st R & J Bett (Yarburgh flock),
2nd L. A. & M. A. Holtom & Son (Spring flock), 3rd T. Stayt (Statesman flock).
Ram lamb: 1st Windrush Farming Partners (Windrush flock), 2nd T. Stayt, 3rd R & J Bett.
Aged ewe: 1st R & J Bett, 2nd Windrush Farming Partners, 3rd L. A. & M. A. Holtom & Son.
Shearling ewe: 1st L. A. & M. A. Holtom & Son, 2nd R & J Bett, 3rd L. A. & M. A. Holtom & Son.
Ewe lamb: 1st Windrush Farming Partners, 2nd T. Stayt, 3rd R & J Bett.



GREAT YORKSHIRE SHOW BREED CHAMPION 2018

Breed & Male Champion: R & J Bett - shearling ram - 'YARBURGH SAMSEN'.
Reserve Breed & Female Champion: L. A. & M. A. Holtom & Son
Shearling ewe - 'SPRING SUGAR N SPICE'.
Reserve Male Champion: Windrush Farming Partners - ram lamb - 'WINDRUSH TOPMAN ET'.
Reserve Female Champion: Windrush Farming Partners - ewe lamb - 'WINDRUSH TALENT ET'.

KINGTON SHOW Judge Mr C Morse

Aged ram: 1st S Farrington (Buckies flock).
Shearling ram: 1st D. J. Gwynne Partnership (Creigiau flock),
2nd B. Shakespeare (Inkerman flock), 3rd C. Gwynne & P. Wood (Glannant flock).
Ram lamb: 1st D. J. Gwynne Partnership, 2nd B. Shakespeare.
Aged ewe: 1st C. Gwynne & P. Wood, 2nd & 3rd D. J. Gwynne Partnership.
Shearling ewe: 1st S. Farrington, 2nd D. J. Gwynne Partnership, 3rd C. Gwynne & P. Wood.
Ewe lamb: 1st & 2nd C. Gwynne & P. Wood, 3rd B. Shakespeare.
Group: 1st D. J. Gwynne Partnership, 2nd C. Gwynne & P. Wood, 3rd B. Shakespeare.

Breed Champion: C. Gwynne & P. Wood - ewe lamb - 'GLANNANT TILLY'.
Reserve Breed Champion: D. J. Gwynne Partnership - ram lamb



MORETON SHOW Judge Mr D Cantrill

Shearling ram or over: 1st Windrush Farming Partners (Windrush flock).
Ram lamb: 1st Windrush Farming Partners, 2nd S. Farrington (Buckies flock).
Aged ewe: 1st Windrush Farming Partners.
Shearling ewe: 1st S. Farrington, 2nd Windrush Farming Partners.
Ewe lamb: 1st Windrush Farming Partners, 2nd S. Farrington, 3rd T. Digweed (Tooloos flock).
Pair: 1st Windrush Farming Partners, 2nd S. Farrington, 3rd T. Digweed.

Breed Champion: Windrush Farming Partners - ewe lamb - 'WINDRUSH TREASURE ET'.
Reserve Breed Champion: S. Farrington - shearling ewe.
Reserve Interbreed Pair: Windrush Farming Partners



MORETON SHOW BREED CHAMPION 2018



SHOW



RESULTS



MONMOUTH SHOW Judge Miss L Yeo

Ram, shearling or above: 1st & 2nd C. Gwynne & P. Wood (Glannant flock),
3rd D. J. Gwynne Partnership (Creigiau flock).

Ram lamb: 1st C. Gwynne & P. Wood, 2nd M. Williams (Tregwynt flock), 3rd D. J. Gwynne Partnership.

Aged ewe: 1st D. J. Gwynne Partnership, 2nd M. Williams, 3rd C. Gwynne & P. Wood.

Shearling ewe: 1st D. J. Gwynne Partnership, 2nd S. Farrington (Buckies flock), 3rd C. Gwynne & P. Wood.

Ewe lamb: 1st C. Gwynne & P. Wood, 2nd M. Williams, 3rd C. Gwynne & P. Wood.

Group: 1st C. Gwynne & P. Wood, 2nd M. Williams, 3rd D. J. Gwynne Partnership.

MONMOUTH SHOW
BREED CHAMPION 2018

Breed & Female Champion: D. J. Gwynne Partnership- shearling ewe- 'CREIGIAU SYBIL'.

Reserve Breed & Male Champion: C. Gwynne & P. Wood- ram lamb- 'GLANNANT TONY O'SHEA'.

Reserve Female Champion: C. Gwynne & P. Wood- ewe lamb- 'GLANNANT TILLY'.

Reserve Male Champion: C. Gwynne & P. Wood- shearling ram- 'GLANNANT STIG'.

ROYAL HIGHLAND SHOW Judge Mr A Richards

Ram, shearling or above: 1st & 2nd I. Johnston (Kirkton flock), 3rd F. Barbour (Newark flock).

Ram lamb: 1st & 2nd I. Johnston, 3rd F. Barbour.

Aged ewe: 1st F. Barbour, 2nd I. Johnston, 3rd F. Barbour.

Shearling ewe: 1st F. Barbour, 2nd & 3rd I. Johnston.

Ewe lamb: 1st I. Johnston, 2nd F. Barbour, 3rd I. Johnston.

Breed & Male Champion: I. Johnston- shearling ram.

Reserve Male Champion: I. Johnston- ram.

Reserve Breed & Female Champion: F. Barbour- aged ewe.

Reserve Female Champion: I. Johnston- ewe lamb



BASEBALL CAPS



& SOCIETY TIES



AVAILABLE TO ORDER NOW!

For the latest news & views from
YOUR British Berrichon Sheep Society
visit the website TODAY!

www.berrichonsociety.com



Berrichon du Cher - Herdbuchzucht

Home Bred Ram: DE 01 03 122 96902 NS-D

Producing lambs with much muscle, good conformation and good teeth



Berrichon du Cher - Herdbuchzucht

Ram lamb from Lilian Rameau France



Berrichon du Cher - Herdbuchzucht

Woodston Supreme from Callum & Emma Hillhouse.

Berrichon du Cher - Herdbuchzucht

Rudolf u. André Düvel

Kleine Grund 12

37191 Elvershausen

Telefon 05552 8729

Telefax 05552 709895

e-Mail: RuA.Duevel@t-online.de

www.berrichon-zucht-duevel.de



Visitors are always welcome

WINDRUSH *flock*

Home of the 2018 Royal Three Counties Show breed champion (from 80 catalogued entries)



WINDRUSH TAILOR MADE (NS)

- S. Headlands One In A Million
- D. Windrush Out Of Bounds
- Top price ram lamb Carlisle Premier Sale sold to C. Gwynne & P. Wood (Glannant Flock) and L.A. & M.A. Holtom & Son (Spring Flock) for 1,700gns.



WINDRUSH TALENT (ET)

- S. Musclemann
- D. Westcote Memorable
- 1st prize ewe lamb & reserve female champion Great Yorkshire Show.
- 1st prize ewe lamb, reserve female champion & top price female Worcester Early First Choice Sale sold to R & J Bett (Yarburgh Flock) for 820gns.



WINDRUSH SPOTLIGHT (ET)

- S. Sancerre
- D. Statesman Mathilda
- 1st prize ram lamb & reserve male champion Great Yorkshire Show 2017.
- 1st prize ram lamb & male champion Royal Welsh Show 2017.
- Exported to Germany as a shearing in 2018.

We would like to thank all our customers throughout the 2018 season. We will have top quality stock with the pedigrees to match for sale throughout 2019 as well as our usual group of quality commercial rams.

We may also have semen & embryos for sale occasionally. Export enquiries are welcome.

Contact farm manager Ben Stayt on 01451 822920 or 07795 816951
www.windrushfarm.co.uk

email: btstayt94@hotmail.co.uk

find us on facebook

Windrush Farming Partners



Praidd



We are the **LARGEST**

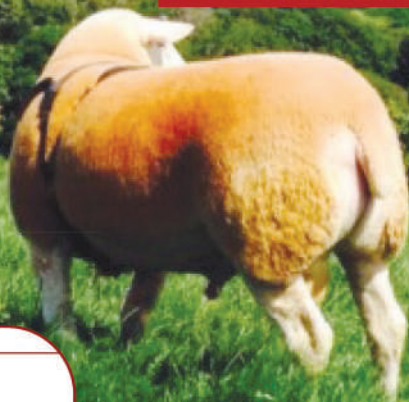
MAXIMUS

Overall breed champion and reserve champion inter-breed at the 2014 & 2015 Royal Welsh Show. Maximus 'semen' for sale

PEDIGREE RAMS & EWES FOR SALE

NEW:

"BLUEBERRY" (Blue Texel X)
LAMBS FOR SALE



Lot No: 11993
Supplier No: TH126
Supplier Name: G B & M H THOMAS
Supplier Address: GOITRE FACH
HENDY
LLANELLI
SA4 0YA
Lot No: 11993
Email:

Kill no	Carcase No	Hot Kg	Ret Kg	Cold Kg	Cost Kg	Net Kg	Grade	Grader	Remarks
1653	88577	21.0	0.5	20.5	0.000	20.5	EXL	Christian Jones	
1654	88578	20.5	0.5	20.0	0.000	20.0	EXL	Christian Jones	
1655	88579	16.5	0.5	16.0	0.000	16.0	E3H	Christian Jones	
1656	88580	18.5	0.5	18.0	0.000	18.0	EXL	Christian Jones	
1657	88581	20.5	0.5	20.0	0.000	20.0	EXL	Christian Jones	
1658	88582	20.0	0.5	19.5	0.000	19.5	EXL	Christian Jones	
1659	88583	18.5	0.5	18.0	0.000	18.0	EXL	Christian Jones	
1660	88584	15.0	0.5	14.5	0.000	14.5	EXL	Christian Jones	
1661	88585	19.0	0.5	18.5	0.000	18.5	E4L	Christian Jones	
1662	88586	17.5	0.5	17.0	0.000	17.0	E3H	Christian Jones	
1663	88587	23.5	0.5	23.0	0.000	23.0	EXL	Christian Jones	
1664	88588	19.5	0.5	19.0	0.000	19.0	E3H	Christian Jones	
1665	88589	16.5	0.5	16.0	0.000	16.0	EXL	Christian Jones	
1666	88590	16.5	0.5	16.0	0.000	16.0	EXL	Christian Jones	
1667	88591	15.0	0.5	14.5	0.000	14.5	EXL	Christian Jones	
1668	88592	18.5	0.5	18.0	0.000	18.0	EXL	Christian Jones	
1669	88593	18.5	0.5	18.0	0.000	18.0	EXL	Christian Jones	
1670	88594	18.5	0.5	18.0	0.000	18.0	EXL	Christian Jones	



Goitre Berrichon x Beltex Competing in the open butcher's lambs class. Winter Fair 2014

GOITRE BERRICHON; THE MODERN BUTCHERS LAMB!

Gareth Beynon Thomas a'r Teulu
Goitre Fach, Hendy, Pontarddulais, Abertawe/ Swansea

GoITRE

registered flock in the UK



PRINCE

New stock-ram: PRINCE, purchased for a new breed RECORD of 3,500gns. Watch out for his offspring this summer!!



Home-bred GOITRE yearling; overall breed champion at the 2013 Royal Welsh Show.

SALVATORE

(Clive) New stock ram, over all breed champion and reserve continental in the 2018 Royal Welsh show.

Breed Record @ GoITRE

Call or Email TODAY

01792 882569 / 07800 580 999
goitrefach@yahoo.com

www.goitreberrichon.co.uk



YARBURGH FLOCK LINCOLNSHIRE



**Sampson, our Breed Champion at Great Yorkshire Show 2018,
later sold at Carlisle for 1800gns**



Excellent pedigrees producing the best quality stock
For enquiries or stock for sale please contact us at
www.yarburghberrichons.co.uk or call Richard 07946 034926



Auctioneers

HARRISON & HETHERINGTON
Farmstock Auctioneers, Brokers & Valuers

BERRICHON CARLISLE 2019

SALES 2019

Friday 30th August

Carlisle Annual Show & Sale of Rams & Females

Friday 13th September

Kelso Ram Sales

Monday 23rd September

NSA Ram Sales

**H&H are the Official Society Auctioneers
for the above sales**

Harrison & Hetherington Ltd
T: 01228 406230/406200
E: info@borderway.com

Borderway
Rosehill
Carlisle CA1 2RS

For all other up to date sales and information visit our website
harrisonandhetherington.co.uk

The Incledon Flock

John, Jean and Lauren Yeo

Incledon Farm, Georgeham, Braunton, Devon, EX33 1JN

Tel: 01271 890200 Mob: 07777623659

Email: incledonfarm@gmail.com



Prefix: INC

Flock No. 270

Est: 2006

M. V. Acc

THE STATESMAN FLOCK

'The Premier Hat trick!'

Statesman Napoleon



Shearling Ram 2014 – Sold for 2,200 gns

Statesman Pinnacle



Shearling Ewe 2016 – Sold for 1,900gns (female centre record)

wallisdonna@aol.com

www.stayt.co.uk



SHAPE, STYLE, SKIN

'All sold through H & H, Borderway Mart, Carlisle Premier Show & Sale'

Statesman Smitten



Ewe lamb 2017 – Sold for 1,200gns (Ewe lamb breed record)

STOCK SIRES USED FOR 2019 SEASON

'Windrush Protector' Proven stock sire in both the Statesman & Hillhead flocks, producing consistent, typey progeny. Sire of Statesman Smitten (see above), Statesman Tantalized (ewe lamb winner at Royal Three Counties Show) & Statesman Talisman (sold at Early Worcester Sale for 680gns).

'Statesman Ramsey' Owned by C. Morse, Marshland Flock. Full brother to Statesman Pinnacle (see above). From one of the best female lines in the flock and sired by Sauchie Macho Man (breed champion Royal Three Counties Show 2014)

Follow us on...



Statesman Berrichons

Tom Stayt

01993 830442 or 07970 472335

wallisdonna@aol.com

www.stayt.co.uk



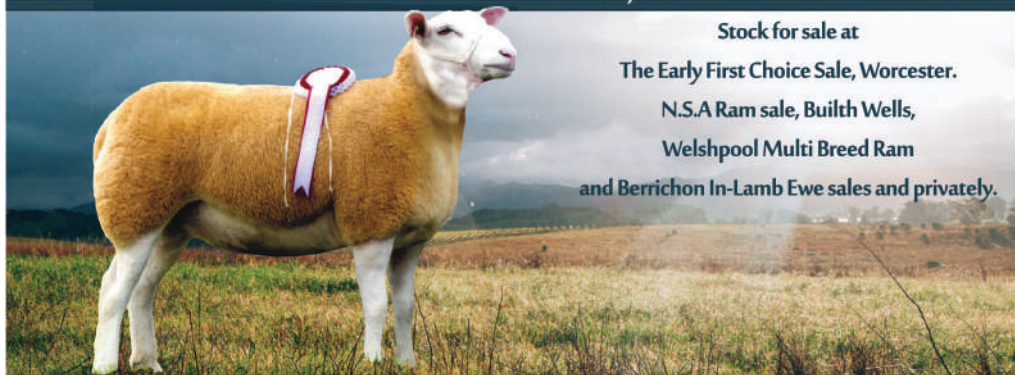
Creigiau Flock of Pedigree British Berrichon Sheep

M.V. Acc

Est 2008

Prefix: DAJ

Flock No. 262



Stock for sale at

The Early First Choice Sale, Worcester.

N.S.A Ram sale, Builth Wells,

Welshpool Multi Breed Ram

and Berrichon In-Lamb Ewe sales and privately.

DAJ/16/504 "CREIGIAU ROWENA" 1st placed Berrichon Shearling Ewe, Breed Champion and Supreme Interbreed Champion at Burwarton Show 2017.

Contact: D. J. Gwynne Partnership, Creigiau, Talgarth, Nr Brecon, Powys

Tel: 01874 711676 Enquiries Welcome

INKERMAN FLOCK

M.V. Accredited All stock bred from ARR/ARR

Flock prefix HMS

Established 1993

Telephone 01873 890 733

A long established flock with stock bred to a type using imported rams from the top flocks in France and leading flocks in the UK. The Inkerman Flock has won numerous show and sale championships, although showing is now confined to a couple of local shows only. Inkerman breeding ewes and the HMS bloodline used throughout leading flocks and rams are consistently sought by commercial lamb producers.

Visitors welcome – stock for sale privately and at sales

Annual consignment of in lamb ewes available at the Welshpool sale - November 2019

Bill and Muriel Shakespeare

Walnut Tree Farm, Pandy, Abergavenny NP7 8ED

01873 890 733 or Mobiles: 07885 197416 / 07740 782298

email: shakespeare.berrichon@gmail.com

NEWARK FLOCK

Sanquhar, Dumfries

Established 1991

M.V Accredited



*Newark Nike
Royal Highland Show
Champion 2017*



*Newark Sparkle
1st prize lamb RHS 2017
1st prize gimmer RHS 2018
Dumfries Show Breed Champion 2018*

NEWARK FLOCK



*Stock Tup - Galtres Prince
Top price shearling Carlisle 2017*



Usual consignments for Carlisle & Kelso All enquiries Welcome

Tel: 01659 50263

Mobile: 07826 124239

info@newarkfarm.com

www.newarkfarm.com

Updated rules for MV & CAE Schemes

Rule 2.5.2 – Non-MV/CAE accredited animal screen

If accredited and non-accredited animals are kept on the same holding, a screen of 12 non-accredited animals must be performed at the time of every Routine Periodic Blood Test.

- The flock's/herd's vet selects the animals that are to be tested – preferentially thin and/or non-productive ewes/does
- If any animal tests antibody positive in the screen the flock/herd will be classified as "high risk" and the accredited flock will revert to one-yearly testing
- A negative screen **does not** indicate freedom from MV/CAE infection in the non-accredited flock/herd and strict biosecurity between accredited and non-accredited animals should always be maintained

Rule 4.1.2 – Adding MV/CAE accredited animals to an MV/CAE accredited flock/herd

All MV/CAE accredited animals added to an MV/CAE accredited flock/herd must be tested between 6 and 12 months after arrival.

- Failure to comply with this rule will lead to the flock/herd reverting to one yearly testing
- Although not compulsory, it is strongly recommended that all added animals regardless of age and accreditation status are also tested at the time of purchase before being added to the accredited flock/herd

Rule 4.1.3 & 4.1.4 – Imported animals, semen and embryos

Imported animals, semen and embryos that are accredited under a non-UK scheme must be kept isolated or not used/implanted until authorisation is given by the PSGHS vet to add them to an accredited flock.

- All imported animals with recognised non-UK MV/CAE accreditation will require testing as per Rule 4.1.2
- Imported animals that are not accredited under a recognised non-UK accreditation scheme will require testing as per Rule 4.1.5

Reasons for the Updated Rules

Despite the low incidence of break downs in accredited flocks/herds, MV and CAE are on the rise in non-accredited commercial flocks/herds around the UK. Even when following the correct biosecurity procedures to maintain separation between accredited and non-accredited flocks/herds, having both on the same holding remains one of the greatest risks to the accredited status of your animals. While the screen of 12 non accredited females cannot be used to completely rule out the presence of MV or CAE in a flock/herd, choosing the oldest, thinnest animals for the screen will give the best indication if the disease is present or not.

Although sourcing MV/CAE accredited animals is the best way to prevent disease being introduced to your flock/herd, there is always some level of risk. Unfortunately we have seen cases where members have broken down with MV/CAE due to the purchase of accredited animals, not because there was a problem with the flock/herd of origin, but because of issues around biosecurity in transport or at a mart.

For members who are on two or three yearly testing, this means that in the past they could have recently carried out their Routine Periodic Blood Test, purchased an accredited animal that has somehow brought disease onto their holding and then spread the disease throughout the flock/herd for the best part of two or three years before being picked up, during which time animals may have been sold to multiple other owners, requiring extensive tracing to be done to make sure all potentially affected owners are notified.

Although we have always advised that best practice is to isolate and test any animals at the time of purchase (even accredited animals), the introduction of the rule to test added accredited animals within 6 to 12 months of purchase will provide much more control over any potential spread of the disease if introduced in this way.

While MV/CAE accreditation is available for owners in other countries, the rules of these schemes and their methods of testing may differ from those of the PSGHS schemes. For this reason the PSGHS vets have to be able to review the standards of the foreign scheme for imported animals, semen or embryos before being added to a flock/herd or used/implanted.

Our aim is to make all of our schemes as robust as possible, while also maintaining a level of practicality for our members. By responding to issues that arise and updating our rules accordingly we are able to keep improving and strengthening our schemes. Accrediting your animals for MV or CAE and sourcing accredited stock for purchase is still the best way to control the diseases within your flock/herd. As well as the biosecurity and regular testing that the schemes involve, there is also the added benefit of having our health scheme vets able to discuss your situation with your own vet on an individual basis in order to help gain accreditation or deal with any problems that arise.

WINDRUSH *flock*



Binding Edge

Windrush Flock

Photograph from left to right Ben Stayt, Sarah Harkness & Peter Harkness

The Windrush Flock of British Berrichons was founded in 2014 and in just five years has established itself as a leading producer of quality stock for both the pedigree and commercial markets.

Sitting on top of the Cotswold Hills, at approximately 700ft above sea level, Windrush Farm was bought by businessman Peter Harkness who had kept, as a hobby, the Keresforth flock of White-faced Woodland sheep at his previous home in Yorkshire. Moving to Gloucestershire, with his wife Sarah, Peter wanted to establish a proper farming

business and bought a small arable unit near Cheltenham.

"I put a small ad in the local paper for somebody to mind my sheep – and it was answered by Ben Stayt, who had just finished his "A" levels. It was a fortunate break," says Peter "Although we are four decades apart in age, we got on well and wanted to achieve the same things – a prize-winning flock which would be the heart of a viable small farming business."

Realising that Peter's rare breed sheep were not going to be the basis of a proper business, Ben proposed the pedigree breeding

business model on which the success of **Windrush** has been built. In addition to a house, which needed upgrading, Windrush Farm was just two unused barns and bare, unfenced fields. The two agreed a business plan, which started with new grass leys and half a dozen stock-fenced paddocks were created. Over time the original buildings have been , and the main barn has more than doubled in size by adding a new lambing shed. Since then five parcels of rented land, scattered nearby, have been added to the business, almost tripling the original acreage.

Once the farm was set up for sheep production, discussions began about which 'serious' pedigree breed could form the basis of the business. A few breeds were considered but the pin ultimately fell on the British Berrichon due to Ben's experience with the breed back home. Ben believes the Berrichon is a very underrated terminal sire in an emerging market and capable of matching or outperforming the other main terminal sire breeds.

The foundation stock was purchased with mostly the **Statesman** prefix which Ben was able to select from the best families with proven genetics. The stock ram was purchased from the Headlands flock and named **One In A Million**. He has certainly lived up to his name with just his first crop of ram lambs averaging over £1000 each. Since these initial purchases, very few animals have been bought in with Ben focussing on breeding an identifiable 'Windrush' type of sheep - animals with shape, style, tight skins and easy fleshing carcasses. Ben firmly believes Berrichons with these traits compare well with the other terminal sire breeds. **One In A Million's** progeny have replicated, and Windrush is proud to have sold many sons of his, as well as daughters, into other pedigree flocks, not only in England but also Northern Ireland and more recently Germany. 'Windrush' Berrichons have performed well for their new owners and Ben gets a lot of satisfaction from this.

Shows and sales are a big part of the farm's activities throughout the year. The Windrush name can regularly be seen competing nationally with great success. Wins have come at The Royal Three Counties, The Great Yorkshire and The Royal Welsh, as well as smaller events. In 2015, **The Windrush Flock** won the award for best show flock, an achievement both Peter and Ben are proud of. Windrush stock can often be seen headlining society sales at the Carlisle Premier and Early Worcester auctions.

Ben firmly believes an important factor to the success of the flock lies within genetics and emphasis is placed on carefully planned breeding programmes. Peter has encouraged a scientific approach and backs Ben's judgement and they have three successful seasons of embryo transfer behind them. In an attempt to open up the genetics within the breed and offer something different, three rams have been used for AI - two French imports, **Muscleman** and **Sancerre** as well as British born **James Bond**. Only small batches of semen have been available, so it was decided to AI the best breeding ewes and then flush them for embryo transfer. The programmes are drawn up in conjunction with AB Europe, after Ben has decided with what ram each ewe will be serviced and by what process. **One In A Million** is still used by natural service on unrelated ewes that are known to breed well with him.

A teaser ram is used and is an invaluable asset to the process.

Ewes are sponged to achieve a tighter lambing period and PMSG given upon removal. "Ben is fastidious and will follow our programme to the letter," says Peter "we both believe attention to detail is a major factor in our success". In the past, 100% hold rate has been achieved with frozen semen and 80% hold rate has been achieved with embryos implanted into recipient ewes. The ET and AI lambs born from these programmes have topped both the show ring and the sale ring.

Ben now lives on site at Windrush Farm so he can keep on top of the business and still manage all the off-farm pastures easily. Peter and Ben agree on a business plan with sales targets every year and are always looking to develop the enterprise. The latest development is a small flock of pedigree Beltex, run on a different system to the Berrichon flock, with later lambing and stock sold only as shearlings. The Beltex are tupped naturally and lambed naturally to give confidence that the rams produced will go on and perform well for the commercial man. And Peter is delighted that a small flock of the original Woodland sheep remain - although much improved by Ben's breeding talents - and they find a steady demand among rare breed fans and organisations like the National Trust, for conservation grazing.

For more info on Windrush Berrichons or the other pedigree breeds, please see the Windrush advert on page 39



Grassroots

PEDIGREE SOFTWARE SOLUTIONS



Great service, great software and a real understanding of the needs of pedigree breeders are what Grassroots is all about.

As a member of the Defra Farm Animal Genetic Resources (FAnGR) Committee that Grassroots has played a key role in establishing our National Breed Inventory which provides the foundation for the Government's Breeds at Risk policy.

-- Marcus Bates, member FAnGR committee

Grassroots Pedigree Software Solutions

Established in 1997 we provide specialist computer software to over 130 Pedigree Breed Societies of Sheep, Cattle, Pigs, Goats, Horses, Donkeys and Camelids as well as a number of Membership Organisations.

Breed Societies

Find out more about how Grassroots help breed societies.

[Read More](#)

Copyright © Devon Cattle Society

For Farmers

Find out if your breed uses Grassroots and how to use the on line registries.

[Read More](#)

Membership Organisations

Find out more about how Grassroots could help your society or club.

[Read More](#)

Organisations we link to

Find out more about our links to other organisations and systems.

[Read More](#)

Tregwynt Flock

'Bred for conformation for the Commercial farmer'



Tregwynt Pene -
MRW/15/612

Breed Champion
Burwarton Show 2018

2nd prize Aged Ewe
Monmouth Show 2018.

Tregwynt Tia -
MRW/18/1367

Reserve Breed Champion
Brecon Show 2018

1st prize Ewe lamb
Burwarton Show, 2nd
prize Ewe Lamb
Monmouth Show 2018



Tregwynt Pene
MRW/15/612



Tregwynt Tia
MRW/18/1367

Males & Females for Sale - Enquiries always welcome

Mick Williams, Tregwynt, Three Ashes, Hereford, HR2 8LY
Tel: 01989770059 / 07974 360 807 Email: andysue7@btconnect.com

HEATWAVE

BY POON
PRODUCTS

- HEATS COLD MILK TO BE FED AD LIB
- FEEDS UP TO 50 LAMBS



FRISKY LAMB WARMER BY POON PRODUCTS

- HYGIENIC, PLASTIC
- READY TO USE
- GENTLE AIR FLOW
- FREE FAN HEATER
- FOR 2 OR 3 LAMBS
- AFFORDABLE



POON
PRODUCTS

info@pyonproducts.com

www.pyonproducts.com

t. 01432 830409

m. 07968 177726

MARSHLAND BERRICHONS

Very proud breeders of

MARSHLAND SALVADORE

*Breed Champion Berrichon &
Reserve Continental Champion
at the 2018 Royal Welsh Show.*

CONGRATULATIONS TO THE THOMAS FAMILY OWNERS

*We have won 1st in the Shearling Ewe class
at The Royal Welsh Show for the last two years.*

Reserve Female Champion 2018.

*Champion ewe at the Welshpool In Lamb Sale
for the last two years.*

*Show potential stock for sale, breeding natural
fleshing and tight skinned Berrichons.*

M.V Acc.

CLIVE MORSE

Prefix: CIM

Tel: 07778 333 270

GLANNANT BERRICHONS

Established 2010



Tony O'Shea



1st prize in Ram Lamb class & Male Champion at the Royal Three Counties.

1st in Ram Lamb class Male Champion and Reserve Breed Champion at Monmouth Show.

Worcester Early First Choice Sale 1st Ram Lamb class and Reserve Breed Champion.

Brecon Show 1st Ram Lamb then Breed Champion.

Sold in joint ownership to Charles and Rebecca Holtom (Spring Berrichons)

ENQUIRIES & VISITORS WELCOME

Home Tel: 01874 711 173

Carl Mob: 07971 429 778

Paula Mob: 07855 104795

Email: carlgwynne@hotmail.com

Windrush Tailor Made



Windrush Tailor Made was bought in joint ownership with Charles and Rebecca Holtom (Spring Berrichons)

Carl Gwynne & Paula Wood
The Pykes, Hay Road
Talgarth, Brecon
Powys, LD3 0AN



JANOS

Flock Prefix: YKK

Penrhos, Trefeglwys, Caersws, Powys, SY175QT

CHAMPIONS AT... THE FOUR MAIN BREED SOCIETY SALES

WORCESTER CHAMPION 2018



CARLISLE CHAMPION 2018



FEMALE CHAMPION RWAS 2018



NSAI CHAMPION 2018



WELSHPOOL CHAMPION 2018



**SERVICE SIRE
FOR 2019**

● GOITRE POCKET ROCKET
● JANOS SYDNEY ● MARSHLAND TROY
Lambs by these sires showing good potential

Bryan & Jano Evans bryan.evans@bibbyagri.com

Tel: 01686 430 385 or Mob: 07801 868 626



Membership

- 1a) Full Membership is £36.00 per year (inclusive of VAT)
 1b) Junior Membership (0 – 18 Years) is £12.00 per year (inclusive of VAT)
 1c) Membership runs from the 1st January each year. In order to be eligible to register sheep, enter Society Sales or exhibit in Breed Classes at Shows (see Show list). **Membership subscriptions must be paid in full by 31st January.**
 1d) Voting rights – Fully paid up adult members may vote at the A.G.M. One subscription allows one vote. Members must have registered sheep to enable them to vote.
 1e) Promotional Items – A range of promotional wear is available for members to purchase and can be personalised to promote their own flock. Further details from the Society Office.
 1f) Change of Address & Contact details – Members should notify the Society of any change of address or contact details.
 1g) Payment of Accounts – Payment can be made by cheque or if preferred by BACS using the details below:

Sort Code: 40-32-04 Account Number: 41133349

Please use your flock prefix / invoice number as a reference for payments made.

Registration and Identification of Sheep

- 2a) Tagging should be used for Pedigree identification. The Pedigree number must be printed on the tag.
 2b) **Any animal that loses a tag must be retagged with the same number.**
 2c) The Pedigree number must consist of the Flock Code (three letters), the year number followed by the number of each individual animal.

Example: ABC/18/001

Please note the lambing year date for identification is now December 1st so any animals born during December will carry the following years number for identification, but the Date of Birth will be printed on their Pedigree Certificate.

Example: Lamb born on December 15th 2016 will be registered as follows: **ABC/19/001**

- 2d) Naming of animals is optional, **the letter for 2019 is "U"**
 2e) Registration of Home bred Sheep:

Birth Notifications:

- 1st December to 31st May £2.00 +VAT (£2.40) per animal
- 1st June to 30th December £5.00 + VAT (£6.00) per animal

Full Registrations:

- To upgrade to full registration from birth notified until 31st May £10.00 +VAT (£12.00) per animal
- To birth notify and fully register lambs born before 31st May £12.00 +VAT (£14.40) per animal
- To upgrade to full registration previously birth notified between 1st June and 30th Nov £10.00 +VAT (£12.00) per animal
- To birth notify and fully register lambs between 1st June and 30th Nov £15.00 + vat (£18.00) per animal
- Up to 2 years of age £50.00 + vat (£60.00) per animal

All sheep must be birth notified before registration (birth notification and full registration can be done at the same time please see registration form) and dates will be strictly adhered to.

Example:

A lamb born on 3 January 2018 birth notified by 31st May and then fully registered before 30th November would cost: £2.40 to birth notify and then £12.00 to fully register so a total of £14.40.

No sheep will be accepted for sale at a Society Sale unless it is fully registered beforehand by the breeder.

Sheep being shown must also be fully registered beforehand.

2f) Registrations **must be made online via Grassroots or on paper by post** to the Society Office.

2g) Registrations forms must be fully completed including the E.I.D tag numbers otherwise they will be returned to the member.

2h) Payment must accompany the application form either by cheque or via BACS (details above), registrations will not be processed without payment.

2i) The Society has a three week turnaround period for registrations from the date received at the Society Office. Animals must be registered in ample time before the closing dates for Shows and Sales (please see Sales Rules) the Society carries no responsibility for entry dates missed if animals are not registered in time.

2j) No grading up permitted.

2k) Transfers free of charge, to be notified to the Secretary.

Embryo Transplant & Artificial Insemination.

3a) Embryo Transplant strictly by written permission to the Council, and written permission received from the Council before commencement.

3b) Applications to register lambs born by embryo transfer and artificial insemination must be accompanied by the appropriate certificate containing the Sire, Dam and recipient ewe where applicable.

Importation & Exportation of Animals

4a) Sheep imported with the Society's knowledge and of a Pedigree standard must be registered within eight weeks of importation by the importer, or before Sale by the importer, whichever is the sooner.

4b) Pedigree certificates and details of sheep including ear numbers must be sent to the Society office within 30 days of uplift from the relevant country.

4c) Registration fees for Imported animals:

Fee for registration within 6 months £25.00 per animal.

Fee for registration between 6 months and 12 months £250.00 per animal.

All charges are subject to VAT

4d) Exported sheep must go through the Society Office to enable the appropriate certificate to be issued.

Sales

5a) Sale details can be found within the Society Yearbook or on the Society Website.

5b) Entries will only be accepted from fully paid up members.

5c) Entries must be made by the closing date – no late entries will be accepted.

5d) Entries will only be accepted by post or via Email (if via email payment must be made immediately by Bacs)

5e) Entries must be accompanied by the fully completed entry form, pedigree certificates and payment. If full payment is not received with the entry form then the entries will be returned to the vendor and not accepted until payment is received.

5f) All sheep entered must have been registered with the Society and certificates have been issued.

5g) Substitutes are allowed at Society Sales. Two substitutes will be allowed, provided that notification of ear numbers have been made to the Society Secretary 48 hours prior to the Sale and Pedigree certificates are given to Sale inspectors prior to the inspection.

5h) Substitute lots will be given a Red Neck Tie with the lot number on.

5i) Substitutes must be like for like e.g Ram lambs for ram lambs.

5j) Substitutes not notified to the Secretary prior to arrival at the Sale will be rejected.

5k) All sheep entered for Sale at Society Sales will be subject to Inspection. The Inspectors decision will be final.

5l) The following weights will be applied at Society Sales:

Shearling and Aged Ewes:	70 kgs
Ewe Lambs:	45 kgs
Shearling and Aged Rams:	90 kgs
Ram Lambs:	60 kgs

Any animal not reaching these weights will be rejected.

5m) Show Classes at Sales; Vendors will be permitted to enter 2 animals per class per vendor.

5n) Upset Prices:

There will an upset price in place at Society Sales please refer to the relevant Sale Catalogue for the Upset price or call the Society Office for more information.

Shows

6a) All sheep being shown at a Society Show or Sale must be fully registered with the Society.

6b) Sheep to be in current ownership for at least 3 months prior to the Show.

6c) Runs of sheep at Sales;

The Maximum run of sheep at Society Sales will be 12.

(Vendors can enter more than this but sheep will be split up.)

Presentation of Sheep

7a) All Sheep 12 months and over for Show & Sale to be clipped bare on or after 1st April.

7b) All sheep for Show and Sale to be presented as the Shepherd wishes.

7c) Society Sales, Bloom dip allowed.

General

8a) The use of growth promoters are banned by the Society, and the Society reserves the right to random test any sheep presented at any show or Sale.

8b) Handlers of sheep at Shows and Sales to be suitably dressed and presented in a clean and tidy manner wearing a White coat.

8c) Remember when selling and showing sheep –

"You are an Ambassador for the Breed"

FED UP OF FEED COSTS?

Berrichon sired lambs are...

EASILY BORN EASILY REARED EASILY FINISHED



Rakefoot Flock

Established 1991

M.V Accredited

Rakefoot is a Lake district hill farm, as well as breeding sheep for the pedigree and commercial market we also breed rams for our own use, this has enabled us over 28 years to select bloodlines to produce correct naturally tight skinned sheep with easy fleshing ability capable of being finished off grass.



RAKEFOOT TYWIN Second prize ram lamb
Carlisle 2018 sold for 1100 gns to Ewan Burgess
Contact 017687 72133 for details

Email: Wllmckbn@aol.com

SHOW DATES 2019

SHOW NAME	SHOW DATE	CLOSING DATE	PHONE NUMBER
Devon County	16 – 18 May	8 March	01392 353705
Kenilworth	8 June	9 May	01788 833910
Cumberland	15 June	17 May	01228 812601
Royal Three Counties	14 – 16 June	16 April	01684 584901
Royal Highland	20 – 23 June	21 April	0131 3356213
Monmouth	6 July	3 June	01873 890365
Hanbury Show	6 July	3 June	07884 033502
Great Yorkshire	9 – 11 July	9 May	01423 546231
Royal Welsh	22 – 25 July	25 April	01982 554403
Burwarton	1 August	4 July	01746 787535
Tenbury Wells	3 August	6 July	01584 810818
Brecon	3 August	5 July	01874 611881
Dumfries	3 August	1 July	01461 201199
Bucks County	29 August	July	01296 680400
Moreton in Marsh	7 September	31 July	01608 651908
Kington Show	14 September	16 August	01547 529298



www.berrichonsociety.com

Premier Sheep And Premier Lamb Drench

Organically chelated trace element
vitamin supplements

Not all mineral drenches are the same



For more information contact Jonathan Guy

T 01886 880482

M 07866 607466

E jganimalhealth@aol.com

W www.jganimalhealth.com